



# Catalogue

sheets • hoses • flooring • mats • tiles

**TRIGOSA**

+34 692 91 43 89 Barcelona (España)

INDUSTRIAL RUBBER PRODUCTS



**TRIGOSA**  
+34 692 91 43 89 Barcelona (España)

## Rubber sheeting

Tolerances		6
Technical information		7
Sheeting		
Populair 150	SBR/NR	18
SBR plates	SBR/NR	20
SBR strips	SBR/NR	21
Populair 70	SBR/NR	22
Neoprene 150	CR/SBR	23
Neoprene plates	CR/SBR	24
Neoprene 40	CR/SBR	25
Nitril 150	NBR/SBR	26
Anodoro Extra – FDA	NBR	27
Anodoro Special – FDA	NBR	27
EPDM 150	EPDM/SBR	28
EPDM plates	EPDM/SBR	29
EPDM 25	EPDM	29
Para brown	NR	30
Para grey	NR	31
Abrasion resistant red	NR	32
Abrasion resistant black	NR	33
Silicone transparent – FDA	MPQ	34
Silicone red – FDA	MPQ	34
Hypalon	CSM	35
Fluor Elastomer	FPM	35
Polyurethane	PU	36
EPDM	EPDM	37
Cellular rubber sheeting	CR	38
Flexible PVC	PVC	39

## Silicone hoses

Straights		43
Straights oil resistant		44
Straights flexible		45
Elbow 90°		46
Elbow 45°		47
Reducers straights		48
Bellows		49
Bellows oil resistant		50
Hose clamps		51/52

## Flooring and matting

### Ribbed flooring

Small ribbed	55
Switchboard flooring	55
Medium ribbed	56
Combi ribbed	56
Broadribbed	57
Industrial tears	57
Checker	58
Diamond	59
Pyramid	59

### Stud flooring

Decktop non-skid	60
IN 32 and IN 42	60
IN 4028	61
IN 4012	61
IN 4520	62
IN 3023	62
Stud T26 tile	63
Ardesia tile	63

### Rubber flooring

Recyfloor R12	64
Tile carrier	64
Recyfloor R12 black	65
Recyfloor protect	65
Ultrafloor	66
PVC-non-skid-mat	67

### Ringmatting

Vera light execution	68
Vera heavy execution	68
Vera small honeycomb execution	69
Ringmat on roll	69

### Anti-fatigue mats

Ringmat M14	70
Soft diamond	70
Modular mat	71

### Flooring for vehicles and stables

Rearboard mat	72
Turtle mat	73
Trailer mat	73
Block mat	74
Puzzle mat P 25	74
Puzzle mat P 30	75
Stable mat M 40	75
Stable mat M 42	76
Stable mat M 45	76

### Playground and patio tiles

Patio and terrace tiles	79
Playground tiles	79
Keystone paver	80
Puzzle tile	80

### PVC interlocking tiles

Industrial tears	83
Leather look	84
Turtle surface	85

# Rubber sheeting

Technical information

## Tolerances

thickness (mm)	tolerance
0.5	+ 0.25 / - 0.20
1 - 1.5	± 0.2
1.6 - 3.5	± 0.3
3.6 - 5.5	± 0.4
5.6 - 6.3	± 0.5
8	± 0.7
10	± 0.8
12	± 1.0
15	± 1.5
20	± 1.5
25	± 2.0
30	± 2.0
35	± 3.0
40	± 4.0
50	± 4.0
60	± 4.5

0/+ 24 mm for width

0/+ 200 mm for length



## Descriptions

In the following descriptions any statement of the range of properties shown for a given result is intended for guidance only. Consideration must be given to the environment in which the rubber is to work and the duty it is expected to perform. If any doubt exists on any application or the properties which can be obtained from a specific rubber the manufacturer should be consulted.

### Natural Rubber (NR)

Natural rubber offers a good balance of properties, particularly for mechanical applications and can be compounded to produce high resilience, good tensile strength, low compression set and high tear properties over a wide range of hardnesses. The abrasion resistance of natural rubber is good. It has better resilience, and maintains flexibility at lower temperatures better than most synthetics.

However, natural rubber is less resistant to ozone, petroleum oils and fluids than some of the synthetics. The operational temperature range of natural rubbers is -40°C to + 70°C.

### Styrene - Butadiene Rubber (SBR)

Styrene-butadiene Rubbers possess properties similar to those of natural rubber. Temperature range -40°C to + 80°C.

### Ethylene Propylene Rubber (EPDM)

Ethylene Propylene rubber has outstanding resistance to ageing, weathering, ozone, oxygen and many chemicals. It has high and low temperature stability as well as steam and water resistance. It has a good resistance to glycol-ether hydraulic fluids but is not suitable for contact with petroleum liquids. Operational temperature range -40°C to + 120°C.

### Chloroprene (CR)

Chloroprene, generally known as Neoprene, has more resistance than natural rubber to sunlight, ozone and oxidation. It has good resistance to heat and does not soften as natural rubber does under severe exposure. It has moderate oil resistance but is not suitable for use with petrol. It can be compounded to possess flame retardant properties.

### Acrylonitrile - Butadiene Rubber (NBR)

Generally known as Nitrile, it has excellent resistance to water, oil, fuel and other petroleum products. It is superior to most elastomers in compression set, cold flow and abrasion resistance. It does not, however, possess good resistance to ozone, sunlight or weather. The temperature range -20°C to +110°C.

### Chlorosulphonated Polyethylene Rubber (Hypalon\* CSM)

Hypalon\* rubber has excellent resistance to water, ozone, abrasion, flex cracking, acids and weather. It has good flame resistant properties as well. Temperature range -20°C to +120°C.

### Silicone Rubber (MPQ)

Silicone rubber has excellent resistance to temperature extremes. Temperatures as high as 200°C have a little effect on the physical properties of the elastomer. However, it has poor tensile strength, tear, abrasion and steam resistance. It has very good resistance to sunlight, ozone, oxygen, gases and possesses good electrical insulation properties, water repellency and non adhesiveness. Temperature range - 100°C to + 150°C.

### Polyurethane (PU)

Polyurethane elastomers have outstanding abrasion resistance at moderate temperatures. It has very high tensile strength, tear strength and load bearing capabilities. It has resistance to oils, certain solvents, greases, ozone, sunlight and weather. Resistance to acids and alkalies is poor. Temperature range -40°C to +60°C.

### Fluorinated Hydrocarbon (VITON\* FPM)

Viton\* has a good resistance to most chemicals and commercial fluids. It has the ability to retain strength at elevated temperature and to withstand embrittlement during long term heat exposure. Temperature range -10°C to +200°C.

## technical information

Norm	Conc.	Allowable working temp. C°.	NR/SBR, SBR	NBR (nitrile)	CR (neoprene)	EPDM	IIR (Butyl)	CSM (hypalon)	Q (silicone)	FPM (viton)
Acetaldehyde			B	C	C	C	-	C	A	B
Acetamide			C	B	B	A	A	B	-	-
Acetic acid	10%	50°	D	D	D	C	B	B	-	-
Acetic acid	50%	50°	D	C	D	D	C	C	-	-
Acetic acid conc.			D	B	C	A	B	C	-	-
Acetic anhydride			B	D	A	B	B	A	-	-
Acetone			A	D	B	A	A	C	B	-
Acetyl chloride			-	-	D	D	-	D	-	-
Acetylene			A	A	B	A	A	B	-	-
Acrylonitrile		50°	D	D	B	C	D	C	-	-
Adipic acid			-	A	-	-	-	-	-	A
Alum, aqueous		65°	A	A	A	A	A	A	-	-
Aluminium chloride, aqueous		65°	A	A	A	A	A	A	-	-
Aluminium flouride		65°	A	A	A	A	A	A	-	-
Aluminiumsulfate, aqueous		65°	A	A	A	A	A	A	-	-
Ammonium chloride, aqueous			A	A	A	A	A	A	-	A
Ammonia, gas			A	A	A	A	A	A	A	A
Ammonia liquid			-	-	-	A	B	D	C	-
Ammonium carbonate		70°	A	D	B	A	A	-	-	-
Ammonium hydroxide, solution of			A	B	A	A	A	A	-	-
Ammonium nitrate, aqueous			A	A	A	A	A	A	B	A
Ammonium phosphate, aqueous			A	A	A	A	A	A	A	A
Ammonium sulfate, aqueous			A	A	A	A	A	A	A	A
Amyl acetate			D	D	D	B	B	D	C	-
Amyl alcohol		50°	A	B	A	A	A	A	A	A
Amyl borate			D	A	A	D	D	-	-	A
Amyl chloronaphtene			D	D	C	D	D	D	-	-
Amyl naphtalene			D	C	D	D	D	D	-	-
Aniline			B	D	C	A	B	D	B	A-B
Aniline hydrochloride			C	B	D	D	B	D	-	-
Aniline oil			D	D	C	C	A	D	-	-
Animal oil			D	A	B	B	B	B	-	-
Ansul ether			D	C	D	C	C	D	-	-
Arsenic acid			-	-	A	A	A	A	A	A
Asphalt			D	B	C	D	D	C	B	A
Barium chloride, aqueous			A	A	A	A	A	A	A	A
Barium hydroxide			A	A	A	A	A	A	A	A
Barium sulfide			A	A	A	A	A	A	A	A
Beer			A	A	A	A	A	A	A	A
Beet sugar solution			A	A	A	A	A	A	C	B
Benzaldehyde			D	D	D	A	B	D	-	-
Benzene			D	D	D	D	D	D	-	A-B
Benzine			D	A	D	D	D	D	-	A
Benzyl alcohol			-	D	B	A	B	B	-	-
Benzyl benzoat			D	D	D	B	A	-	-	A
Benzyl chloride			C	D	D	D	B	D	B	A
Black liquor			A	A	A	A	A	A	-	-
Blast furnace gas			C	C	A	C	C	C	-	-
Borax, aqueous			A	A	A	A	A	A	-	-
Boric acid, aqueous		100°	A	A	A	A	A	A	-	-
Brake fluid		50°	A	D	A	A	A	A	-	-
Bromine			D	D	D	D	D	C	-	A

### Key to the table:

- A = Non or slight effect. Recommended
- B = Light effect. Often useable
- C = Heavy effect. Can be used in some cases
- D = Unsuitable
- = Information missing

Norm	Conc.	Allowable working temp. C°.	NR/SBR, SBR	NBR (nitrile)	CR (neoprene)	EPDM	IIR (Butyl)	CSM (hypalon)	Q (silicone)	FPM (viton)
Bromo benzene			D	D	D	D	D	D	-	-
Bromo trifluoride			D	D	D	D	D	D	-	-
Bunker oil			D	A	D	D	D	D	-	-
Butadien			-	D	B	C	C	B	-	A
Butane			D	A	B	D	D	A	C	A
Butane liquid			D	A	B	D	D	B	C	A
Butanol		100°	A	A	A	A	B	A	-	-
Butene			D	B	C	D	D	C	-	-
Butter		100°	D	A	C	C	D	C	A	A
Butyl acetate			D	D	D	B	C	D	C	-
Butyl acetyl ricinoleate			D	C	D	A	A	B	-	-
Butyl acrylate		50°	D	D	D	D	D	D		
Butyl amine			D	C	D	D	D	D	B	-
Butyl benzoate			-	-	D	A	A	D	-	A
Butyl carbitol			-	A	C	A	A	B	-	A
Butyl glycol			A	A	B	A	A	B	-	-
Butyl oleate			D	-	D	B	B	D	B	A
Butyl stearate		70°	D	A	D	C	B	D	-	-
Butylene			D	B	C	D	D	C	-	A
Butyraldehyde			C	C	C	B	B	C	A	A
Calcium bisulfate, aqueous			C	A	A	B	B	A	A	A
Calcium chloride, aqueous			A	A	A	A	A	A	A	A
Calcium hydroxide		100°	A	B	A	A	A	A	B	A
Calcium hypochlorite	20%		-	C	B	A	A	A	-	-
Calcium hypochlorite, aqueous			D	D	D	A	A	B	C	A
Cane sugar solution			A	A	A	A	A	A	-	-
Carbitol			B	C	C	B	A	B	-	-
Carbolic acid (phenol)			C	C	C	A	C	C	-	-
Carbon dioxide			A	A	A	A	A	A	A	A
Carbon disulfide			D	C	D	D	D	D	-	A
Carbon monoxide			B	A	A	A	A	A	B	A
Carbon tetrachloride			D	C	D	D	D	D	-	-
Castor oil		100°	A	B	C	A	A	B	A	A
Chile salpêtre			A	A	A	A	A	A	-	-
Chlorinated solvents			D	D	D	D	D	D	-	-
Chlorine			C	D	C	C	C	B	-	-
Chlorine dioxide			-	D	D	C	D	B	C	A
Chlorine trifluoride			-	D	D	D	C	D	-	-
Chlorine water	3%		D	D	D	D	D	C	B	B
Chloro nitro ethane			D	D	D	-	D	D	-	-
Chloroacetic acid			C	C	B	B	B	B	-	-
Chloroacetone			-	D	C	A	C	C	-	-
Chlorobenzene		50°	D	D	D	D	D	D	-	-
Chlorobromomethane			D	D	D	D	D	D	-	A
Chlorododecane			D	D	D	D	D	-	-	-
Chloroform			D	D	D	D	D	D	-	A
Chloronaphtaline			D	D	D	D	D	D	-	-
Chloroprene			D	D	D	D	D	D	-	-
Chlorosulfonic acid			D	D	D	D	D	D	-	-
Chlortoluol			D	D	D	D	D	D	-	-
Chromic acid, solution	10-50%	50°	D	D	D	D	C	A	-	A
Citric acid		70°	A	A	A	A	A	A	A	A

**Key to the table:**

- A = Non or slight effect. Recommended
- B = Light effect. Often useable
- C = Heavy effect. Can be used in some cases
- D = Unsuitable
- = Information missing

## technical information

Norm	Conc.	Allowable working temp. C°.	NR/SBR, SBR	NBR (nitrile)	CR (neoprene)	EPDM	IIR (Butyl)	CSM (hypalon)	Q (silicone)	FPM (viton)
Coconut oil			D	A	B	B	B	C	A	A
Cod liver oil			D	A	B	B	B	B	B	A
Coke-oven gas			B	B	B	D	A	B	C	A
Copper (II) chloride		65°	A	A	B	A	A	B	A	A
Copper (II) sulfate		65°	A	A	A	A	B	A	A	A
Corn oil			D	A	C	B	B	C	A	A
Cottonseed oil		70°	D	A	C	B	A	C	A-B	A
Creosote			D	B	C	D	D	C	B	A
Cresol i-		70°	D	D	D	B	A	D	B	A
Cumene			-	-	D	-	-	D	-	-
Cyclohexane			D	A	C	D	D	C	-	A
Cyclohexanol			D	B	A	D	D	A	B	A
Cyclohexanone			D	D	D	A	C	D	B	C
Cymene			D	D	D	D	D	D	-	-
Decalin cis-/trans-			D	-	D	-	-	D	-	A
Decane			D	D	D	-	D	D	-	-
Diacetone			-	-	-	A	A	-	-	-
Diacetone alcohol			D	D	A	A	A	A	A	-
Dibenzyl ether			D	D	D	B	A	D	B	A
Dibenzyl sebacate			-	-	D	B	B	-	A	B
Dibutyl amine			D	D	D	D	D	D	C	-
Dibutyl ether			D	C	C	C	C	C	-	-
Dibutyl phthalate			D	D	D	A	B	D	-	-
Dibutyl sebacate			D	D	D	B	B	D	A	B
Dichlore isopropyl ether			D	D	D	C	C	D	-	C
Dichlorobenzene			D	D	D	D	D	D	-	-
Dicyclohexylamine			D	B	D	D	D	D	-	-
Diesel fuel			D	A	C	D	D	C	-	-
Diethyl amine			D	B	C	D	D	C	B	-
Diethyl benzene			D	D	D	D	D	D	-	-
Diethyl sebacate			-	D	D	B	B	D	-	-
Diethylene glycol		100°	A	A	A	A	A	A	B	A
Diisobutylene (mixture of isomers)			-	B	C	-	-	C	-	-
Diisopropyl benzene			D	D	D	D	D	D	-	-
Diisopropyl ketone			D	D	D	B	B	D	-	-
Dimethyl aniline			D	D	D	B	B	D	B	A
Dimethyl formamide N, N-			B	B	D	B	B-C	B	B	-
Dimethyl phtalate			D	D	D	B	B	D	-	B
Dinitrotoluene			D	D	D	D	D	D	-	-
Diocetyl phthalate		100°	D	C	D	B	C	D	-	-
Diocetyl sebacate			D	C	D	B	B	D	-	-
Dioxane			D	D	D	-	B	D	-	-
Dioxolane			D	D	D	B	C	D	-	-
Dipentene			D	B	D	D	D	D	-	-
Diphenyl		70°	D	D	D	D	D	D	-	A
Diphenyl oxide			D	D	D	A	D	D	B	C
Epichlorohydrin		50°	D	D	D	B	C	D	-	-
Ethanol		50°	A	A	A	A	A	A	A	A
Ethanolamine		70°	A	A	B	A	A	C	-	-
Ether			D	B	D	C	C	C	-	-
Ethyl acrylate			-	D	D	B	B	D	-	-
Ethyl benzene			D	D	D	D	D	D	-	-

### Key to the table:

- A = Non or slight effect. Recommended
- B = Light effect. Often useable
- C = Heavy effect. Can be used in some cases
- D = Unsuitable
- = Information missing

Norm	Conc.	Allowable working temp. C°.	NR/SBR, SBR	NBR (nitrile)	CR (neoprene)	EPDM	IIR (Butyl)	CSM (hypalon)	Q (silicone)	FPM (viton)
Ethyl benzoate			-	-	-	B	B	-	-	-
Ethyl chloride			B	B	B	A	A	D	-	-
Ethyl chlorocarbonate			D	-	C	-	B	C	-	-
Ethyl chloroformiate			-	-	C	-	-	C	-	-
Ethyl formiate			D	D	B	B	B	B	-	-
Ethyl glycol			C	A	A	B	A	-	-	-
Ethyl glycol acetate			C	D	D	A	A	D	-	-
Ethyl mercaptane			D	D	D	D	D	B	-	-
Ethyl oxalate			A	D	C	A	A	D	-	-
Ethyl pentachlorobenzene			D	C	D	D	D	D	-	-
Ethyl silicate			B	A	A	A	A	B	-	-
Ethylacetate			C	D	C	A	B	C	-	-
Ethylacetoacetate			C	D	C	B	B	D	-	-
Ethylcellulose			A	A	A	B	B	-	-	-
Ethylene			-	A	-	-	-	-	-	-
Ethylene chloride			D	D	D	B	C	D	-	-
Ethylene chlorohydrine			C	D	A	-	A	B	-	-
Ethylene diamine			B	A	A	A	A	B	-	-
Ethylene glycol		100°	A	A	B	A	A	B	-	-
Ethylene oxide			-	D	D	C	C	D	-	-
FCKW 12			D	B	A	B	B	A	-	-
FKW 125			C	A	C	A	C	A	-	-
FKW 134A			B	A	B	A	C	A	-	-
Fluid 101		100°	D	A	D	D	D	D	-	-
Fluorine, liquid			-	-	D	C	C	-	-	-
Fluoro benzene			D	D	D	D	D	-	-	A
Fluoroboric acid			A	A	A	A	A	A	-	-
Fluorochloro ethylene			-	D	-	-	C	-	-	-
Formaldehyde			-	-	-	-	-	-	A	A
Formic acid	10%	60°	B	B	B	B	A	B	-	-
Formic acid		70°	B	C	C	B	B	C	B	C
Freon 11			B	A	A	D	D	A	-	-
Freon 112			D	B	C	D	D	B	-	-
Freon 113			B	A	A	C	C	A	-	-
Freon 114			A	A	A	A	A	A	-	-
Freon 114 B2			C	B	A	D	D	A	-	-
Freon 115			A	A	A	A	A	A	-	-
Freon 13 B1			A	A	A	A	A	A	-	-
Freon 142 B			A	A	A	A	A	A	-	-
Freon 152 A			A	A	A	A	A	C	-	-
Freon 21			D	D	C	C	C	D	-	-
Freon 218			A	A	A	A	A	A	-	-
Freon 22			A	C	A	A	A	A	-	-
Freon 31			B	D	A	A	A	B	-	-
Freon 316 C			A	A	A	A	A	A	-	-
Freon 318 C			A	A	A	A	A	A	-	-
Freon 32			A	A	A	A	A	A	-	-
Freon 502			-	A	B	D	-	-	-	-
Freon BF			D	B	B	-	D	B	-	-
Freon MF			B	A	C	-	D	D	-	-
Freon TA			A	A	A	A	A	A	-	-
Freon TC			B	A	A	B	A	A	-	-

**Key to the table:**

- A = Non or slight effect. Recommended
- B = Light effect. Often useable
- C = Heavy effect. Can be used in some cases
- D = Unsuitable
- = Information missing

## technical information

Norm	Conc.	Allowable working temp. C°.	NR/SBR, SBR	NBR (nitrile)	CR (neoprene)	EPDM	IIR (Butyl)	CSM (hypalon)	Q (silicone)	FPM (viton)
Freon TF			B	D	D	D	D	D	-	-
Freon TMC			C	B	B	B	B	B	-	-
Freon T-P 35			A	A	A	A	A	A	-	-
Freon T-WD 602			B	B	B	B	A	B	-	-
Fuel oil		70°	D	A	B	D	D	B	-	-
Fumaric acid			A	A	B	-	D	B	-	-
Furan			D	D	D	C	C	D	-	-
Furfural			C	D	D	B	B	C	-	-
Gallic acid			B	C	B	B	A	B	A	A
Gasohol			D	C	D	D	D	-	-	-
Gelatine, aquaeous			A	A	A	A	A	A	A	A
Glucose			A	A	A	A	A	A	A	A
Glycerol (glycerine)		100°	A	A	A	A	A	A	A	C
Green liquor			A	A	A	A	A	A	-	-
Hexachlorobutadiene			D	A	D	D	D	D	-	-
Hexaldehyde			D	D	A	A	A	C	C	-
Hexane n-			D	A	A	D	D	B	-	A
Hexanol			A	A	B	C	B	B	C	A
Hexene			D	B	B	D	D	B	-	-
Hydraulic oil, glycol-based			A	A	A	A	A	A	B	C
Hydraulic oil, mineral oil			D	A	A	D	D	B	C	A
Hydraulic oil, phosphate ester			D	D	C	A	A	D	B-C	A
Hydraulic oil, silicate ester			D	C	C	D	D	C	-	-
Hydrazine			-	B	B	A	A	B	-	-
Hydrobromid acid			B	D	B	A	A	A	-	-
Hydrochloric acid	10%	100°	C	C	A	D	B	A	-	-
Hydrochlorid acid	20%	50°	B	B	A	B	A	A	A	A
Hydrocyanic acid	37%		B	B	A	A	A	A	B	B
Hydrofluoric acid	50%		C	C	A	A	A	A	A-B	A-B
Hydrofluoric acid	75%		C	D	C	-	A	A	A-B	A-B
Hydrofluoric acid, anhydrous			-	D	A	C	A	-	-	-
Hydrogen			A	A	A	A	A	A	A	C
Hydrogen peroxide	30%		A	A	A	A	A	A	A-B	-
Hydrogen peroxide	85%		D	D	D	C	C	C	-	-
Hydrogen sulfide			A	D	A	A	A	B	A	-
Hydroquinone			B	C	-	-	-	-	-	-
Hypochlorous acid			B	D	C	C	B	B	-	-
Inorganic salts		70°	A	A	A	A	A	A	A	A
Iodine pentafluoride			D	D	D	D	D	D	-	A
Iodoform			-	-	-	A	A	-	-	-
Iron (II) sulfate		65°	A	A	A	A	A	A	A	A
Iron (III) chloride		65°	A	A	A	A	A	A	-	-
Isobutanol			A	B	A	A	A	A	A	A
Isooctane			C	A	A	D	D	B	A	A
Isophorone			-	D	-	A	A	-	-	-
Isopropanol			B	B	A	A	A	A	A	A
Isopropyl acetate			D	D	D	B	B	D	B	-
Isopropyl chloride			D	D	D	D	D	-	-	A
Isopropyl ether			D	B	B	-	D	B	-	-
Kerosene		70°	D	A	C	D	D	C	C	A
Lactic acid		70°	A	A	A	A	A	A	-	-
Lead sulphamate			B	B	B	A	A	B	-	-

### Key to the table:

- A = Non or slight effect. Recommended
- B = Light effect. Often useable
- C = Heavy effect. Can be used in some cases
- D = Unsuitable
- = Information missing

Norm	Conc.	Allowable working temp. C°.	NR/SBR, SBR	NBR (nitrile)	CR (neoprene)	EPDM	IIR (Butyl)	CSM (hypalon)	Q (silicone)	FPM (viton)
Lead tetraethyl			-	-	B	D	D	D	-	-
Linoleic acid		70°	-	B	D	D	D	D	-	-
Linseed oil			C	A	B	A	A	B	A	A
Lubricating oils		100°	D	A	B	D	D	B	-	-
Magnesium chloride		65°	A	A	A	A	A	A	A	A
Magnesium hydroxide			A	A	A	A	A	A	-	A
Magnesium sulfate, aqueous		65°	A	A	A	A	A	A	A	A
Maleic acid			B	B	C	C	C	D	-	A
Maleic anhydride			B	-	C	C	C	D	-	-
Malic acid, aqueous			B	A	B	D	D	B	A	A
Mercury			A	A	A	A	A	A	A	A
Mercury chloride			B	B	C	A	A	A	A	A
Mesityl oxide			D	D	D	B	B	D	-	-
Metacrylic acid			D	-	B	B	B	-	-	-
Methane			D	A	A	D	D	B	C	A
Methanol		50°	A	A	A	A	A	A	A	A-B
Methyl acetate			D	D	D	B	B	D	-	-
Methyl acrylate			D	D	D	B	B	D	-	-
Methyl bromide			-	B	D	-	-	D	-	-
Methyl butyl ketone			D	D	D	B	B	D	C	-
Methyl chloride			D	D	D	C	C	D	-	C
Methyl cyclopentane			D	-	C	C	D	-	-	-
Methyl ethyl ketone			C	C	-	-	-	-	-	-
see Ethyl methyl ketone			C	D	C	A	A	D	-	-
Methyl formiate			C	D	B	B	B	B	-	-
Methyl glykol acetate			-	-	-	-	-	-	-	-
Acetic acid -2- methoxy ethyl ester		50°	B	D	C	-	A	B	-	-
Methyl isobutyle ketone			D	D	D	B	B	D	-	-
Methyl isopropyle ketone			D	D	D	C	B	C	-	-
Methyl methacrylate			D	D	C	C	C	D	-	-
Methyl salicylate			-	D	D	B	B	D	-	-
Methylaniline			D	D	D	-	-	D	-	-
Methylene chloride			D	D	D	C	C	D	-	-
Metyl oleate			D	D	D	B	B	-	-	-
Milk			A	A	A	A	A	A	A	A
Mineral oil			C	A	B	D	D	B	B-C	A
Mineral oil ASTM Nr.I		100°	C	A	A	D	D	A	B	A
Mineral oil ASTM Nr.II (IRM 902)		100°	D	A	B	D	D	C	C	B
Mineral oil ASTM Nr.III (IRM 903)		100°	D	A	D	D	D	D	C	B
Naphta			D	A	D	D	D	D	B	A
Naphtalene		80°	D	D	D	D	D	D	-	-
Naphtanic acid			D	B	-	D	D	-	-	-
Natural gas			C	A	A	D	D	A	-	A
Nickel chloride		65°	A	A	A	A	A	A	-	-
Nickel sulfate		65°	A	A	A	A	A	A	A	A
Nitric acid	10%	50°	B	B	C	A	A	A	C	A-B
Nitric acid	60%		D	D	D	D	D	B	-	A-B
Nitric acid fuming			D	D	D	D	D	D	-	-
Nitro benzene		50°	D	D	D	A	A	D	-	B
Nitro ethane			B	D	C	B	B	B	-	-
Nitro methane			B	D	C	B	B	C	-	-
Nitro propane n-			C	D	-	A	A	-	-	-

**Key to the table:**

- A = Non or slight effect. Recommended
- B = Light effect. Often useable
- C = Heavy effect. Can be used in some cases
- D = Unsuitable
- = Information missing

## technical information

Norm	Conc.	Allowable working temp. °C.	NR/SBR, SBR	NBR (nitrile)	CR (neoprene)	EPDM	IIR (Butyl)	CSM (hypalon)	Q (silicone)	FPM (viton)
Nitrogen			A	A	A	A	A	A	-	-
Nitrogen tetroxide			D	D	D	C	C	D	-	-
Octochlorotoluene			D	D	D	D	D	D	-	-
Octadecene			D	A	B	D	D	B	-	-
Octane			D	-	-	D	D	-	-	A
Octanol (1)			B	B	A	A	A	A	B	A
Oleic acid			D	A	D	C	D	C	-	B
Olive oil		50°	C	A	B	C	B	B	B	A
Oxalic acid		70°	A	C	B	A	A	A	-	-
Oxidising salt solutions		70°	-	-	B	D	-	C	-	-
Oxige			C	A	A	A	A	A	-	-
Oxygen liquid			-	C	-	-	A	-	-	-
Ozone		40°	D	D	B	A	B	A	A	A
Palmitic acid			C	A	B	B	B	C	A	B
Perchloric acid			-	D	B	B	B	B	-	A
Perchloroethylene			D	C	D	D	D	D	B	A
Petroleum		95°	D	A	B	D	D	C	B	A
Phenol		100°	D	D	D	B	B	D	B	A
Phenyl ethyl ether			D	D	D	D	D	D	-	-
Phenyl hydrazine			C	D	C	B	C	D	-	-
Phorone			D	D	D	B	B	D	-	-
Phosphoric acid	50%	50°	A	C	B	A	A	A	B	A
Phosphoric acid, raw			C	C	C	C	C	A	-	-
Phosphorous trichloride			D	D	D	A	A	-	-	-
Picnic acid		100°	B	B	A	B	B	A	A	A-B
Pine oil		70°	D	B	D	D	D	D	B	A
Pinen		70°	D	B	D	D	D	C	-	-
Piperidine			D	D	D	D	D	D	-	-
Potassium chloride			A	A	A	A	A	A	B	A
Potassium cyanide			A	A	A	A	A	A	A	B
Potassium hydroxide			B	C	C	A	A	A	C	A
Potassium permanganate		70°	-	-	B	A	-	C	A	A
Potassium sulfate, aqueous			A	A	A	A	A	A	A	A
Propane			D	A	B	D	D	B	-	A
Propanol (1)		50°	A	B	A	A	A	A	B	A
Propene			D	C	D	D	D	D	-	-
Propyl acetate			D	D	D	B	B	D	-	-
Propyl nitrate			-	-	D	B	B	D	-	-
Propylamine			D	D	D	C	C	D	-	-
Propylene oxide			D	-	D	B	B	D	-	-
Pydraul F-9		80°	D	D	D	B	C	D	-	-
Pyridine			D	D	D	B	A	D	-	C
Pyrrole			C	D	D	C	D	D	-	-
Rape seed oil		100°	D	A	B	B	C	C	B	-
Salicylic acid, aqueous			-	A	A	A	A	-	-	A
Salt and salt solutions		70°	A	A	A	A	A	A	A	A
Sewage			C	A	B	B	C	A	-	-
Silicate ester			D	B	A	D	D	A	-	-
Silicofluoric acid			B	B	B	B	C	A	-	-
Silicone grease			-	A	B	A	A	B	B	A
Silicone oils			-	A	A	A	A	A	B	A
Skydrol 500		70°	D	D	D	A	B	D	-	-

### Key to the table:

- A = Non or slight effect. Recommended
- B = Light effect. Often useable
- C = Heavy effect. Can be used in some cases
- D = Unsuitable
- = Information missing



Norm	Conc.	Allowable working temp. C°.	NR/SBR, SBR	NBR (nitrile)	CR (neoprene)	EPDM	IIR (Butyl)	CSM (hypalon)	Q (silicone)	FPM (viton)
Skydrol 7000		70°	D	D	D	A	B	D	-	-
Soap solutions			A	A	A	A	A	A	A	A
Sodium bicarbonate			A	A	A	A	A	A	A	A
Sodium bisulphate			A	A	A	A	A	A	A	A
Sodium carbonate		100°	A	A	A	A	A	A	A	A
Sodium chloride			A	A	A	A	A	A	A	A
Sodium cyanide, solution of			A	A	A	A	A	A	A	A
Sodium hydroxide			B	C	C	A	A	C	-	-
Sodium hydroxide	10%	100°	A	A	A	A	A	A	B	C
Sodium hydroxide	20%	100°	A	D	A	A	A	A	-	-
Sodium hypochlorite			D	D	D	A	A	B	A	A
Sodium metaphosphate			A	A	C	A	A	B	A	A
Sodium nitrate			C	C	C	A	A	A	A	A
Sodium perborate			C	C	C	A	A	A	A	A
Sodium peroxide			B	C	B	A	A	B	-	B
Sodium phosphates			B	B	C	A	A	A	A	A
Sodium silicate			A	A	A	A	A	A	A	A
Sodium sulfate			A	A	A	A	A	A	A	A
Sodium sulphite			A	A	A	A	A	A	A	A
Sodium thiosulfate, aqueous			A	A	A	A	A	A	A	A
Soybean oil			C	A	B	C	C	B	A	A
Stannic (II) chloride, aqueous			A	A	A	B	B	A	-	-
Steam		120°	C	A	B	A	A	B	-	-
Stearic acid		70°	C	B	B	B	D	B	A	B
Styrene		23°	D	D	D	D	D	D	-	-
Sugar solutions			A	A	A	A	A	A	A	A
Sulfur			D	D	A	A	A	A	A	A
Sulfur chloride			D	C	C	D	D	A	-	-
Sulfur dichloride			D	C	C	-	D	B	-	-
Sulfur dioxide			C	C	C	A	B	D	-	-
Sulfur hexafluoride			A	A	A	A	A	B	-	-
Sulfur trioxide			C	C	C	C	C	B	C	A
Sulfuric acid	5-10%	100°	A	C	A	A	A	A	B	A
Sulfuric acid	10-50%		A	A	A	C	A	A	-	A
Sulfuric acid	50-80%	100°	C	D	D	-	A	D	-	A
Sulfuric acid fuming Oleum	20%		D	D	D	D	D	D	-	A
Sulfurous acid			B	B	B	B	A	A	B	B
Tannic acid			B	A	A	A	A	A	B	A-B
Tar			D	B	C	D	D	C	B	A
Tartaric acid, aqueous		100°	A	A	A	B	A	A	A	A
Test fuel B 4			D	B	C	D	D	C	-	-
Test fuel C			D	B	D	D	D	D	-	-
Tetrabromomethane			D	D	-	D	D	-	-	-
Tetrabutyl titanate			B	A	A	A	B	-	-	-
Tetrachlorethane			-	D	-	-	D	-	-	-
Tetrahydrofurane			D	D	D	D	D	D	-	-
Tetralin			D	D	D	D	D	D	-	A
Thionyl chloride			D	-	D	D	D	D	-	-
Titanium tetrachloride			D	C	D	D	D	D	-	-
Toluene			D	D	D	D	D	D	-	A
Toluene diisocyanate		70°	C	-	D	A	A	D	-	-
Transformer oil			D	A	B	D	D	C	B	A

**Key to the table:**

- A = Non or slight effect. Recommended
- B = Light effect. Often useable
- C = Heavy effect. Can be used in some cases
- D = Unsuitable
- = Information missing

## technical information

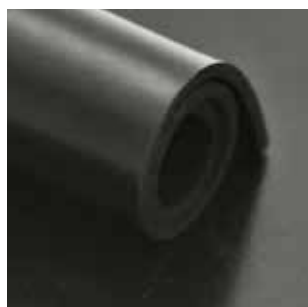
Norm	Conc.	Allowable working temp. C°.	NR/SBR, SBR	NBR (nitrile)	CR (neoprene)	EPDM	IIR (Butyl)	CSM (hypalon)	Q (silicone)	FPM (viton)
Triacetin			C	B	B	A	A	B	-	-
Triaryl phosphate			D	D	C	A	A	C	-	-
Tributoxy ethyl phosphate			C	D	D	B	B	D	-	-
Tributyl phosphate		100°	C	D	D	A	C	D	-	-
Trichloroacetat acid		20°	-	B	B	B	B	B	-	-
Trichloroethane (1, 1, 1)			D	D	D	D	D	D	-	A
Trichloroethylene			D	D	D	D	D	D	-	A-B
Tricresyl phosphate		70°	C	D	D	A	A	D	A	B
Triethynol amine			B	C	A	B	B	A	-	-
Triethyl amine			D	A	C	D	D	C	-	-
Triethyl borane		70°	-	-	D	C	-	D	-	-
Trinitrotoluene			D	D	B	D	D	B	-	-
Triocetyl phosphate			D	D	D	A	A	D	C	-
Turpentine			D	A	D	D	D	D	-	-
Turpentine oil			D	A	D	C	C	D	-	-
Varnishes			D	D	D	D	C	D	-	-
Vegetable oils			D	A	B	B	B	B	A	A
Vinegar			C	C	C	A	A	A	A	C
Vinyl acetylene		-20°	B	-	B	A	A	B	-	A
Vinyl chloride monomer			-	-	D	B	-	D	-	A
Water			A	A	B	A	A	A	A	A
Water, distilled		100°	A	A	B	A	A	B	A	A
Whisky and wines			A	C	A	A	A	A	-	-
Wood oil			D	A	B	A	A	B	-	-
Xylene, mixture of isomers			D	D	D	D	D	D	-	-
Zinc chloride			C	C	C	A	A	A	A	A-B
Zinc sulfate			A	A	A	A	A	A	A	A

**Key to the table:**

- A = Non or slight effect. Recommended
- B = Light effect. Often useable
- C = Heavy effect. Can be used in some cases
- D = Unsuitable
- = Information missing

**Rubber sheeting**

Populair 150



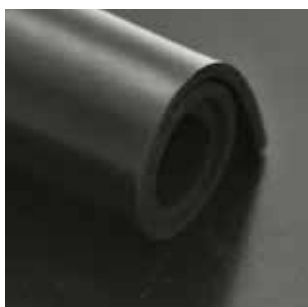
**Styrene - Butadiene Rubber (SBR)**

With its good mechanical properties SBR rubber sheeting is one of the most popular sheeting's used in industrial applications. The high abrasion resistance and the resistance to ageing makes it a quality for long working life.

quality : SBR/NR  
 hardness : 70° Shore A ± 5°  
 colour : black  
 tensile strength : 3 MPa  
 S.G. : 1,50 g/cm<sup>3</sup>  
 execution : both sides smooth  
 temperature range : -20°C / +70°C

article code	thickness (mm)	width (mm)	length (mm)	insertions	weight (kilo/m <sup>2</sup> )	price per m <sup>2</sup> (euro)
4601000140	1	1400	20000	-	1,5	3,60
4601500140	1,5	1400	15000	-	2,25	5,40
4601510140	1,5	1400	15000	1	2,25	7,20
4602000120	2	1200	10000	-	3	7,30
4602000140	2	1400	10000	-	3	7,30
4602010120	2	1200	10000	1	3	9,00
4602010140	2	1400	10000	1	3	9,00
4603000120	3	1200	10000	-	4,5	10,60
4603000140	3	1400	10000	-	4,5	10,60
4603010120	3	1200	10000	1	4,5	11,90
4603010140	3	1400	10000	1	4,5	11,90
4603020120	3	1200	10000	2	4,5	14,00
4603020140	3	1400	10000	2	4,5	14,00
4604000120	4	1200	10000	-	6	14,00
4604000140	4	1400	10000	-	6	14,00
4604010120	4	1200	10000	1	6	15,30
4604010140	4	1400	10000	1	6	15,30
4604020120	4	1200	10000	2	6	17,50
4604020140	4	1400	10000	2	6	17,50
4605000120	5	1200	10000	-	7,5	17,50
4605000140	5	1400	10000	-	7,5	17,50
4605010120	5	1200	10000	1	7,5	18,90
4605010140	5	1400	10000	1	7,5	18,90
4605020120	5	1200	10000	2	7,5	21,10
4605020140	5	1400	10000	2	7,5	21,10

Populair 150



**Styrene - Butadiene Rubber (SBR)**

With its good mechanical properties SBR rubber sheeting is one of the most popular sheeting's used in industrial applications. The high abrasion resistance and the resistance to ageing makes it a quality for long working life.

quality : SBR/NR  
 hardness : 70° Shore A ± 5°  
 colour : black  
 tensile strength : 3 MPa  
 S.G. : 1,50 g/cm<sup>3</sup>  
 execution : both sides smooth  
 temperature range : -20°C / +70°C

article code	thickness (mm)	width (mm)	length (mm)	insertions	weight (kilo/m <sup>2</sup> )	price per m <sup>2</sup> (euro)
4606000120	6	1200	10000	-	9	21,10
4606000140	6	1400	10000	-	9	21,10
4606020140	6	1400	10000	2	9	24,80
4606020120	6	1200	10000	2	9	24,80
4608000120	8	1200	5000	-	12	27,90
4608000140	8	1400	5000	-	12	27,90
4608020120	8	1200	5000	2	12	31,60
4608020140	8	1400	5000	2	12	31,60
4610000101	10	1000	10000	-	14	35,20
4610000120	10	1200	5000	-	15	35,20
4610000140	10	1400	5000	-	15	35,20
4610020120	10	1200	10000	2	15	38,10
4610020140	10	1400	5000	2	15	38,10
4612000140	12	1400	5000	-	18	42,20
4612020140	12	1400	5000	2	18	45,80
4615000140	15	1400	5000	-	22,5	46,70
4615020140	15	1400	5000	2	22,5	56,40
4620000140	20	1400	5000	-	30	69,60

### SBR plates



#### Styrene - Butadiene Rubber (SBR)

With its good mechanical properties SBR rubber sheeting is one of the most popular sheeting's used in industrial applications. The high abrasion resistance and the resistance to ageing makes it a quality for long working life.

quality	: SBR/NR
hardness	: 70° Shore A ± 5°
colour	: black
tensile strength	: 3 MPa
S.G.	: 1,50 g/cm <sup>3</sup>
execution	: both sides smooth
temperature range	: -20°C / +70°C

article code	thickness (mm)	sheets dimensions (mm)	weight (kilo/m <sup>2</sup> )	price per m <sup>2</sup> (euro)
4615000100	15	1000 x 1000	22,5	57,00
4620000100	20	1000 x 1000	30	75,00
4625000100	25	1000 x 1000	37,5	100,00
4625000120	25	2500 x 1200	37,5	107,00
4630000100	30	1000 x 1000	45	112,00
4630000120	30	2500 x 1200	45	122,00
4635000100	35	1000 x 1000	52,5	138,00
4640000100	40	1000 x 1000	60	150,00
4640000120	40	2500 x 1200	60	158,00
4650000100	50	1000 x 1000	75	187,00
4650000110	50	1000 x 1200	75	206,00
4650000120	50	2500 x 1200	75	206,00
4660000100	60	1000 x 1000	90	235,00
4680000100	80	1000 x 1000	120	410,00
4680000120	80	2000 x 1000	120	460,00
4699000100	100	1000 x 1000	150	615,00

**SBR strips**



**Styrene - Butadiene Rubber (SBR)**

With its good mechanical properties SBR rubber sheeting is one of the most popular sheeting's used in industrial applications. The high abrasion resistance and the resistance to ageing makes it a quality for long working life.

quality : SBR/NR  
 hardness : 70° Shore A ± 5°  
 colour : black  
 tensile strength : 3 MPa  
 S.G. : 1,50 g/cm³  
 execution : both sides smooth  
 temperature range : -20°C / +70°C

article code	thickness (mm)	width (mm)	length (mm)	price per m (euro)
4699903003	3	30	10000	0,72
4699903004	4	30	10000	0,92
4699904003	3	40	10000	0,92
4699905005	5	50	10000	1,95
4699910003	3	100	10000	2,25
4699920003	3	200	10000	3,90
4699920010	10	200	5000	9,10
4699910020	20	100	5000	9,80
4699920020	20	200	5000	19,50
4699920030	30	200	5000	28,50

**SBR strips with adhesive**



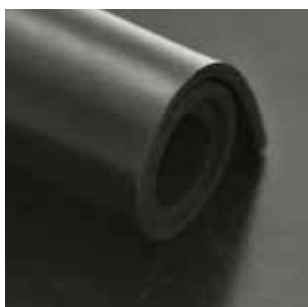
**Styrene - Butadiene Rubber (SBR)**

With its good mechanical properties SBR rubber sheeting is one of the most popular sheeting's used in industrial applications. The high abrasion resistance and the resistance to ageing makes it a quality for long working life.

quality : SBR/NR  
 hardness : 70° Shore A ± 5°  
 colour : black  
 tensile strength : 3 MPa  
 S.G. : 1,50 g/cm³  
 execution : one side smooth,  
 reverse site with adhesive  
 temperature range : -20°C / +70°C

article code	thickness (mm)	width (mm)	length (mm)	price per m (euro)
4699803003	3	30	10000	1,10
4699804003	3	40	10000	1,45
4699805003	3	50	10000	1,85
4699806003	3	60	10000	2,20
4699810003	3	100	10000	3,70

Populair 70



**Styrene - Butadiene Rubber (SBR)**

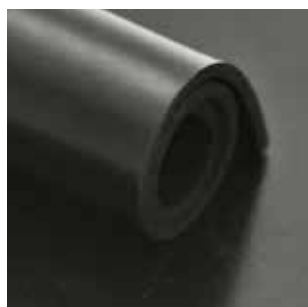
With its good mechanical properties SBR rubber sheeting is one of the most popular sheeting's used in industrial applications. The high abrasion resistance and the resistance to ageing makes it a quality for long working life.

quality : SBR/NR  
 hardness : 70° Shore A ± 5°  
 colour : black  
 tensile strength : 3 MPa  
 S.G. : 1,50 g/cm<sup>3</sup>  
 execution : one side smooth /  
 one side cloth  
 impression  
 temperature range : -20°C / +70°C

article code	thickness (mm)	width (mm)	length (mm)	insertions	weight (kilo/m <sup>2</sup> )	price per m <sup>2</sup> (euro)
4601001140	1	1400	10000	-	1,5	4,50
4601501140	1,5	1400	10000	-	2,25	6,50
4602001140	2	1400	10000	-	3	8,60
4602011140	2	1400	20000	1	3	10,90
4603001140	3	1400	10000	-	4,5	12,50
4603011140	3	1400	10000	1	4,5	14,10
4603021140	3	1400	10000	2	4,5	16,10
4604001140	4	1400	10000	-	6	16,80
4604011140	4	1400	10000	1	6	18,70
4604021125	4	1400	10000	2	6	20,60
4605001140	5	1400	10000	-	7,5	21,10
4605021140	5	1400	10000	2	7,5	24,60
4606001140	6	1400	10000	-	9	25,00
4606021140	6	1400	10000	2	9	28,80



**Neoprene 150**



**Chloroprene (CR)**

Chloroprene, generally known as Neoprene, is due to its properties the multi-functional sheeting. The chemical resistance is better than SBR and it is suitable for outdoor use.

quality : CR/SBR  
 hardness : 65° Shore A ± 5°  
 colour : black  
 tensile strength : 5 MPa  
 S.G. : 1,40 g/cm<sup>3</sup>  
 execution : both sides smooth  
 temperature range : -20°C / +80°C

article code	thickness (mm)	width (mm)	length (mm)	insertions	weight (kilo/m <sup>2</sup> )	price per m <sup>2</sup> (euro)
4801000140	1	1400	20000	-	1,5	7,55
4801500140	1,5	1400	15000	-	2,25	11,40
4801510140	1,5	1400	15000	1	2,25	13,20
4802000140	2	1400	10000	-	3	15,20
4802010140	2	1400	10000	1	3	16,80
4803000140	3	1400	10000	-	4,5	21,80
4803010140	3	1400	10000	1	4,5	23,40
4803020140	3	1400	10000	2	4,5	25,50
4804000140	4	1400	10000	-	6	28,90
4804010140	4	1400	10000	1	6	30,60
4804020140	4	1400	10000	2	6	32,60
4805000140	5	1400	10000	-	7,5	36,20
4805010140	5	1400	10000	1	7,5	37,90
4805020140	5	1400	10000	2	7,5	39,90
4806000140	6	1400	10000	-	9	43,50
4806020140	6	1400	10000	2	9	47,10
4808000140	8	1400	5000	-	12	57,70
4808020140	8	1400	5000	2	12	61,70
4810000140	10	1400	5000	-	15	71,80
4810020140	10	1400	5000	2	15	77,80
4812000140	12	1400	5000	-	18	87,80
4815000140	15	1400	5000	-	22,5	109,80
4820000140	20	1400	5000	-	30	144,00
4825000140	25	1400	5000	-	37,5	180,00

Neoprene plates



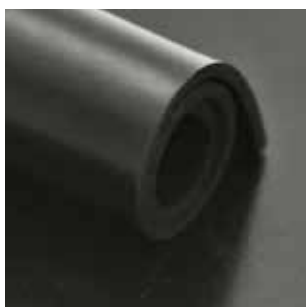
**Chloroprene (CR)**

Chloroprene, generally known as Neoprene, is due to its properties the multi-functional sheeting. The chemical resistance is better than SBR and it is suitable for outdoor use.

quality : CR/SBR  
 hardness : 65° Shore A ± 5°  
 colour : black  
 tensile strength : 5 MPa  
 S.G. : 1,40 g/cm<sup>3</sup>  
 execution : both sides smooth  
 temperature range : -20°C / +80°C

article code	thickness (mm)	sheets dimensions (mm)	insertions	weight (kilo/m <sup>2</sup> )	price per m <sup>2</sup> (euro)
4815000100	15	1000 x 1000	-	23	122,00
4820000100	20	1000 x 1000	-	30	166,00
4825000100	25	1000 x 1000	-	38	248,00
4830000100	30	1000 x 1000	-	45	286,00

**Neoprene 40**



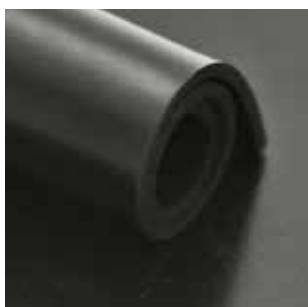
**Chloroprene (CR)**

Chloroprene, generally known as Neoprene, is due to its properties the multi-functional sheeting. The chemical resistance is better than SBR and it is suitable for outdoor use.

quality : CR/SBR  
 hardness : 40° Shore A ± 5°  
 colour : black  
 tensile strength : 5 MPa  
 S.G. : 1,40 g/cm<sup>3</sup>  
 execution : both sides smooth  
 temperature range : -25°C / +100°C

article code	thickness (mm)	width (mm)	length (mm)	weight (kilo/m <sup>2</sup> )	price per m <sup>2</sup> (euro)
5602000140	2	1400	10000	2,5	24,50
5603000140	3	1400	10000	4	35,00
5604000140	4	1400	10000	5,5	46,00
5605000140	5	1400	10000	6,5	58,00
5606000140	6	1400	10000	8	70,00
5608000120	8	1200	5000	11	93,00
5610000120	10	1200	5000	13	147,00
5615000120	15	1200	5000	20	175,00
5620000120	20	1200	5000	26	234,00

**Nitril 150**



**Acrylonitrile - Butadiene Rubber (NBR)**

Generally known as Nitrile, it has excellent resistance to water, oil, fuel and other petroleum products. It is superior to most elastomers in compression set, cold flow and abrasion resistance. It does not, however, posses good resistance to ozone, sunlight or weather.

quality : NBR/SBR  
 hardness : 65° Shore A ± 5°  
 colour : black  
 tensile strength : 5 MPa  
 S.G. : 1,40 g/cm<sup>3</sup>  
 execution : both sides smooth  
 temperature range : -20°C / +80°C

article code	thickness (mm)	width (mm)	length (mm)	insertions	weight (kilo/m <sup>2</sup> )	price per m <sup>2</sup> (euro)
4701000140	1	1400	20000	-	1,5	7,20
4701500140	1,5	1400	15000	-	2,25	11,00
4701510140	1,5	1400	15000	1	2,25	12,60
4702000140	2	1400	10000	-	3	14,60
4702010140	2	1400	10000	1	3	16,20
4703000140	3	1400	10000	-	4,5	22,00
4703010140	3	1400	10000	1	4,5	23,60
4703020140	3	1400	10000	2	4,5	25,60
4704000140	4	1400	10000	-	6	30,00
4704010140	4	1400	10000	1	6	31,60
4704020140	4	1400	10000	2	6	37,60
4705000140	5	1400	10000	-	7,5	37,60
4705010140	5	1400	10000	1	7,5	39,20
4705020140	5	1400	10000	2	7,5	41,20
4706000140	6	1400	10000	-	9	43,20
4706020140	6	1400	10000	2	9	48,80
4708000140	8	1400	5000	-	12	60,00
4708020140	8	1400	5000	2	12	63,00
4710000140	10	1400	5000	-	15	76,00
4710200140	10	1400	5000	2	15	80,00
4712000140	12	1400	5000	-	18	94,00
4715000140	15	1400	5000	-	22,5	116,00
4720000140	20	1400	5000	-	30	150,80

### Anodoro Extra



#### Acrylonitrile - Butadiene Rubber (NBR)

This sheeting is used for general gaskets, countertops and skirting in all areas of food processing. Nontoxic and non-marking. Also approved for food processing, pharmaceutical and cosmetics manufacturing.

quality : NBR  
 hardness : 60° Shore A ± 5°  
 colour : white  
 tensile strength : 5 MPa  
 S.G. : 1,55 g/cm<sup>3</sup>  
 execution : both sides smooth  
 temperature range : -35°C / +110°C

article code	thickness (mm)	width (mm)	length (mm)	weight (kilo/m <sup>2</sup> )	price per m <sup>2</sup> (euro)
4101000140	1	1400	20000	1,5	24,40
4102000140	2	1400	10000	3	32,60
4103000140	3	1400	10000	4,5	46,00
4104000140	4	1400	10000	6	61,00
4105000140	5	1400	10000	7,5	76,00
4106000140	6	1400	10000	9	91,00
4108000120	8	1200	5000	12	121,00
4110000120	10	1200	5000	15	152,00

### Anodoro Special



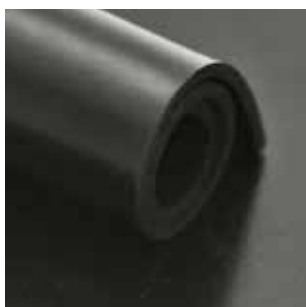
#### Acrylonitrile - Butadiene Rubber (NBR)

This sheeting is used for general gaskets, countertops and skirting in all areas of food processing. Nontoxic and non-marking. Also approved for food processing, pharmaceutical and cosmetics manufacturing.

quality : NBR  
 hardness : 50° Shore A ± 5°  
 colour : white  
 tensile strength : 7 MPa  
 S.G. : 1,45 g/cm<sup>3</sup>  
 execution : both sides smooth  
 temperature range : -20°C / +95°C

article code	thickness (mm)	width (mm)	length (mm)	weight (kilo/m <sup>2</sup> )	price per m <sup>2</sup> (euro)
4103000140S	3	1400	10000	4,35	71,00
4105000140S	5	1400	10000	7,25	114,00
4106000140S	6	1400	10000	8,70	135,00
4108000140S	8	1400	5000	11,60	179,00
4110000140S	10	1400	5000	14,50	226,00

EPDM 150



**Ethylene Propylene Rubber (EPDM)**

Ethylene Propylene rubber has outstanding resistance to ageing, weathering, ozone, oxygen and many chemicals. It has high and low temperature stability as well as steam and water resistance. It has a good resistance to glycol-ether hydraulic fluids but is not suitable for contact with petroleum liquids.

quality : EPDM/SBR  
 hardness : 65° Shore A ± 5°  
 colour : black  
 tensile strength : 5 MPa  
 S.G. : 1,40 g/cm<sup>3</sup>  
 execution : both sides smooth  
 temperature range : -30°C / +100°C

article code	thickness (mm)	width (mm)	length (mm)	insertions	weight (kilo/m <sup>2</sup> )	price per m <sup>2</sup> (euro)
5001000140	1	1400	20000	-	1,3	7,60
5001500140	1,5	1400	15000	-	2	10,60
5002000140	2	1400	10000	-	2,6	14,10
5003000140	3	1400	10000	-	4	20,40
5004000140	4	1400	10000	-	5	27,60
5005000140	5	1400	10000	-	7	34,50
5006000140	6	1400	10000	-	8	41,50
5008000140	8	1400	5000	-	10,5	55,20
5010000140	10	1400	5000	-	13	69,20
5012000140	12	1400	5000	-	16	83,00
5015000140	15	1400	5000	-	21	103,00
5020000140	20	1400	5000	-	26	138,00

### EPDM plates



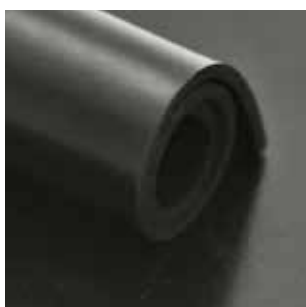
#### Ethylene Propylene Rubber (EPDM)

Ethylene Propylene rubber has outstanding resistance to ageing, weathering, ozone, oxygen and many chemicals. It has high and low temperature stability as well as steam and water resistance. It has a good resistance to glycol-ether hydraulic fluids but is not suitable for contact with petroleum liquids.

quality : EPDM/SBR  
 hardness : 65° Shore A ± 5°  
 colour : black  
 tensile strength : 5 MPa  
 S.G. : 1,40 g/cm<sup>3</sup>  
 execution : both sides smooth  
 temperature range : -30°C / +100°C

article code	thickness (mm)	sheets dimensions (mm)	insertions	weight (kilo/m <sup>2</sup> )	price per m <sup>2</sup> (euro)
501000100	10	1000 x 1000	-	13	76,00
5015000100	15	1000 x 1000	-	21	114,00
5020000100	20	1000 x 1000	-	26	150,00

### EPDM 25



#### Ethylene Propylene Rubber (EPDM)

Ethylene Propylene rubber has outstanding resistance to ageing, weathering, ozone, oxygen and many chemicals. It has high and low temperature stability as well as steam and water resistance. It has a good resistance to glycol-ether hydraulic fluids but is not suitable for contact with petroleum liquids.

quality : EPDM  
 hardness : 27° Shore A ± 5°  
 colour : black  
 tensile strength : 10 MPa  
 S.G. : 1,15 g/cm<sup>3</sup>  
 execution : both sides smooth  
 temperature range : -25°C / +100°C

article code	thickness (mm)	width (mm)	length (mm)	insertions	weight (kilo/m <sup>2</sup> )	price per m <sup>2</sup> (euro)
50300140	3	1400	10000	-	3,45	72,00
50500140	5	1400	10000	-	5,75	120,00

Para brown



**Natural Rubber (NR)**

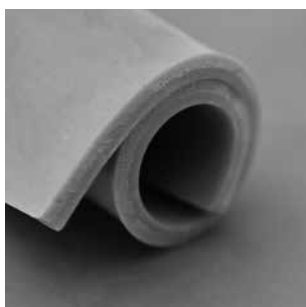
Natural rubber sheeting is outstanding regarding its abrasion resistance. The most used product in environments where the material is exposed for constant friction of abrasive materials.

quality : NR  
 hardness : 45° Shore A ± 5°  
 colour : brown  
 tensile strength : 20 MPa  
 S.G. : 1,05 g/cm<sup>3</sup>  
 execution : both sides smooth  
 temperature range : -25°C / +80°C

article code	thickness (mm)	width (mm)	length (mm)	weight (kilo/m <sup>2</sup> )	price per m <sup>2</sup> (euro)
4201000140	1	1400	20000	1	22,00
4201500140	1,5	1400	15000	1,5	35,00
4202000140	2	1400	10000	2	38,00
4203000140	3	1400	10000	3,5	56,00
4204000140	4	1400	10000	4,5	73,00
4205000140	5	1400	10000	5,5	90,00
4206000140	6	1400	10000	6,5	110,00
4208000140	8	1400	5000	8,5	146,00
4210000140	10	1400	5000	10,5	180,00
4212000140	12	1400	5000	12,5	216,00
4215000140	15	1400	5000	15,5	270,00
4220000140	20	1400	5000	21	360,00



**Para grey**



**Natural Rubber (NR)**

Natural rubber sheeting is outstanding regarding its abrasion resistance. The most used product in environments where the material is exposed for constant friction of abrasive materials.

quality : NR  
 hardness : 45° Shore A ± 5°  
 colour : grey  
 tensile strength : 20 MPa  
 S.G. : 1,05 g/cm<sup>3</sup>  
 execution : both sides smooth  
 temperature range : -25°C / +80°C

article code	thickness (mm)	width (mm)	length (mm)	weight (kilo/m <sup>2</sup> )	price per m <sup>2</sup> (euro)
3702000140	2	1400	10000	2	34,00
3703000140	3	1400	10000	3,5	49,00
3704000140	4	1400	10000	4,5	65,00
3705000140	5	1400	10000	5,5	82,00
3706000140	6	1400	10000	6,5	100,00
3708000140	8	1400	5000	8,5	130,00
3710000140	10	1400	5000	10,5	162,00
3715000140	15	1400	5000	15,5	245,00
3720000140	20	1400	5000	21	325,00

**Abrasion resistant red**



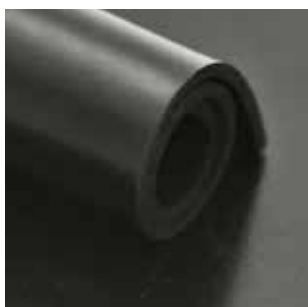
**Natural Rubber (NR)**

Natural rubber sheeting is outstanding regarding its abrasion resistance. The most used product in environments where the material is exposed for constant friction of abrasive materials.

quality : NR  
 hardness : 40 Shore A  $\pm$  5°  
 colour : red  
 tensile strength : 16 MPa  
 S.G. : 1,05 g/cm<sup>3</sup>  
 execution : both sides smooth  
 temperature range : -25°C / +80°C

article code	thickness (mm)	width (mm)	length (mm)	weight (kilo/m <sup>2</sup> )	price per m <sup>2</sup> (euro)
5102000140	2	1400	10000	2	43,00
5103000140	3	1400	10000	3,5	62,00
5104000140	4	1400	10000	4,5	79,00
5105000140	5	1400	10000	5,5	99,00
5106000140	6	1400	10000	6,5	119,00
5108000140	8	1400	5000	8,5	159,00
5110000140	10	1400	5000	10,5	199,00

**Abrasion resistant black**



**Natural Rubber (NR)**

Natural rubber sheeting is outstanding regarding its abrasion resistance. The most used product in environments where the material is exposed for constant friction of abrasive materials.

quality : NR  
 hardness : 60° Shore A ± 5°  
 colour : black  
 tensile strength : 15 MPa  
 S.G. : 1,20 g/cm<sup>3</sup>  
 execution : both sides smooth  
 temperature range : -25°C / +80°C

article code	thickness (mm)	width (mm)	length (mm)	weight (kilo/m <sup>2</sup> )	price per m <sup>2</sup> (euro)
5203000140	3	1400	10000	3,4	38,00
5204000140	4	1400	10000	4,5	51,00
5205000140	5	1400	10000	5,5	70,00
5206000140	6	1400	10000	6,5	84,00
5208000140	8	1400	5000	8,5	96,00

**Silicone transparent**



**Silicone Rubber (MPQ)**

Silicone rubber has excellent resistance to temperature extremes. Temperatures as high as 200°C have a little effect on the physical properties of the elastomer. However, it has poor tensile strength, tear, abrasion and steam resistance. It has very good resistance to sunlight, ozone, oxygen, gases and possesses good electrical insulation properties, water repellency and non adhesiveness.

quality : MPQ  
 hardness : 60° Shore A ± 5°  
 colour : transparent  
 tensile strength : 6,5 MPa  
 S.G. : 1,25 g/cm<sup>3</sup>  
 execution : both sides smooth  
 temperature range : -60°C / +220°C

article code	thickness (mm)	width (mm)	length (mm)	weight (kilo/m <sup>2</sup> )	price per m <sup>2</sup> (euro)
3901000120	1	1200	10000	1,2	37,00
3901500120	1,5	1200	10000	1,8	52,00
3902000120	2	1200	10000	2,4	61,00
3903000120	3	1200	10000	3,6	92,00
3904000120	4	1200	10000	4,8	126,00
3905000120	5	1200	10000	6,0	157,00
3906000120	6	1200	10000	7,2	191,00
3908000120	8	1200	5000	9,6	261,00
3910000120	10	1200	5000	12,0	335,00

**Silicone red**



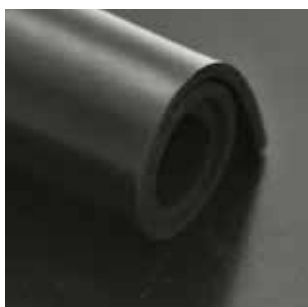
**Silicone Rubber (MPQ)**

Silicone rubber has excellent resistance to temperature extremes. Temperatures as high as 200°C have a little effect on the physical properties of the elastomer. However, it has poor tensile strength, tear, abrasion and steam resistance. It has very good resistance to sunlight, ozone, oxygen, gases and possesses good electrical insulation properties, water repellency and non adhesiveness.

quality : MPQ  
 hardness : 60° Shore A ± 5°  
 colour : red  
 tensile strength : 6,5 MPa  
 S.G. : 1,25 g/cm<sup>3</sup>  
 execution : both sides smooth  
 temperature range : -60°C / +220°C

article code	thickness (mm)	width (mm)	length (mm)	weight (kilo/m <sup>2</sup> )	price per m <sup>2</sup> (euro)
4501000120	1	1200	10000	1,2	37,00
4501500120	1,5	1200	10000	1,8	52,00
4502000120	2	1200	10000	2,4	61,00
4503000120	3	1200	10000	3,6	92,00
4504000120	4	1200	10000	4,8	126,00
4505000120	5	1200	10000	6,0	157,00
4506000120	6	1200	10000	7,2	191,00
4508000120	8	1200	5000	9,6	261,00
4510000120	10	1200	5000	12,0	335,00

## Hypalon



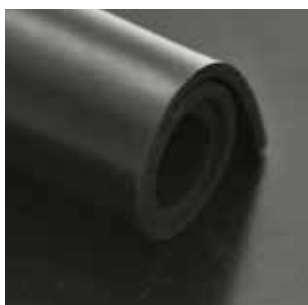
### Chlorosulphonated Polyethylene Rubber (Hypalon\* CSM)

Hypalon\* rubber has excellent resistance to water, ozone, abrasion, flex cracking, acids and weather and also has good flame resistant properties.

quality	: CSM
hardness	: 65° Shore A ± 5°
colour	: black
tensile strength	: 16 MPa
S.G.	: 1,45 g/cm <sup>3</sup>
execution	: both sides smooth
temperature range	: -30°C / +125°C

article code	thickness (mm)	width (mm)	length (mm)	weight (kilo/m <sup>2</sup> )	price per m <sup>2</sup> (euro)
4332000140	2	1400	10000	40	on request
4333000140	3	1400	10000	60	on request
4334000140	4	1400	10000	80	on request
4335000140	5	1400	10000	100	on request
4331000140	10	1400	5000	102	on request

## Fluor Elastomer



### Fluorinated Hydrocarbon (VITON\* FPM)

Viton\* has a good resistance to most chemicals and commercial fluids. It has the ability to retain strength at elevated temperature and to withstand embrittlement during long term heat exposure.

quality	: FPM
hardness	: 75° Shore A ± 5°
colour	: black
tensile strength	: 8,5 MPa
S.G.	: 1,90 g/cm <sup>3</sup>
execution	: both sides smooth
temperature range	: -30°C / +125°C

article code	thickness (mm)	width (mm)	length (mm)	weight (kilo/m <sup>2</sup> )	price per m <sup>2</sup> (euro)
4301000120	1	1200	1000	23	on request
4302000120	2	1200	1000	46	on request
4303000120	3	1200	1000	69	on request
4304000120	4	1200	1000	92	on request
4305000120	5	1200	1000	114	on request
4306000120	6	1200	1000	138	on request
4308000120	8	1200	1000	182	on request
4310000120	10	1200	1000	228	on request

Polyurethane



**Polyurethane (PU)**

Polyurethane elastomers have outstanding abrasion resistance at moderate temperatures. They have very high tensile strength, tear strength and load bearing capabilities. They are resistant to oils, certain solvents, greases, ozone, sunlight and weather. Resistance to acids and alkalis is poor.

quality : PU  
 colour : brown  
 tensile strength : 70° Shore ≤ 40 MPa  
 tensile strength : 90° Shore ≤ 45 MPa  
 S.G. : 1,25 g/cm<sup>3</sup>  
 execution : both sides smooth  
 temperature range : -40°C / +60°C

article code	thickness (mm)	dimensions (mm)	hardness	price per m <sup>2</sup> (euro)
5702000102	2	2000 x 1000	70° Shore	52,00
5703000103	3	2000 x 1000	70° Shore	74,00
5704000104	4	2000 x 1000	70° Shore	96,00
5705000105	5	2000 x 1000	70° Shore	114,00
5706000106	6	2000 x 1000	70° Shore	140,00
5708000108	8	2000 x 1000	70° Shore	176,00
5710000110	10	2000 x 1000	70° Shore	226,00
5712000112	12	2000 x 1000	70° Shore	276,00
5715000115	15	2000 x 1000	70° Shore	344,00
5720000120	20	2000 x 1000	70° Shore	424,00
5725000130	25	2000 x 1000	70° Shore	680,00

article code	thickness (mm)	dimensions (mm)	hardness	price per m <sup>2</sup> (euro)
5802000102	2	2000 x 1000	90° Shore	60,00
5803000103	3	2000 x 1000	90° Shore	90,00
5804000104	4	2000 x 1000	90° Shore	117,00
5805000105	5	2000 x 1000	90° Shore	145,00
5806000106	6	2000 x 1000	90° Shore	177,00
5808000108	8	2000 x 1000	90° Shore	235,00
5810000110	10	2000 x 1000	90° Shore	285,00
5812000112	12	2000 x 1000	90° Shore	345,00
5815000115	15	2000 x 1000	90° Shore	430,00
5820000120	20	2000 x 1000	90° Shore	570,00
5825000130	25	2000 x 1000	90° Shore	850,00

Cellular rubber sheeting



**Ethylene Propylene Rubber (EPDM)**

Ethylene Propylene rubber has outstanding resistance to ageing, weathering, ozone, oxygen and many chemicals. It has high and low temperature stability as well as steam and water resistance. It has a good resistance to glycol-ether hydraulic fluids but is not suitable for contact with petroleum liquids.

quality : EPDM  
 colour : black  
 execution : closed cellfoam  
 density : 120 kg/m<sup>3</sup> +/- 20  
 temperature range : -40°C / +95°C

article code	thickness (mm)	width (mm)	length (mm)	price per m <sup>2</sup> (euro)
27700002	2	1000	20000	5,70
27700003	3	1000	20000	8,30
27700004	4	1000	20000	11,10
27700005	5	1000	20000	13,80
27700006	6	1000	20000	16,60
27700008	8	1000	20000	22,10
27700010	10	1000	20000	27,70
27700012	12	1000	20000	33,20
27700015	15	1000	10000	41,50
27700020	20	1000	10000	55,40
27700025	25	1000	2000	79,00
27700030	30	1000	2000	93,00
27700040	40	1000	2000	121,00
27700050	50	1000	2000	154,00

article code	thickness (mm)	width (mm)	length (mm)	execution	price per m <sup>2</sup> (euro)
27710002	2	1000	20000	adhesive	12,80
27710003	3	1000	20000	adhesive	14,50
27710004	4	1000	20000	adhesive	17,40
27710005	5	1000	20000	adhesive	20,00
27710006	6	1000	20000	adhesive	23,50
27710008	8	1000	20000	adhesive	29,50
27710010	10	1000	20000	adhesive	35,50
27710015	15	1000	10000	adhesive	47,00
27710020	20	1000	10000	adhesive	62,00

### Cellular rubber sheeting



#### Chloroprene (CR)

Chloroprene, generally known as Neoprene, has more resistance than natural rubber to sunlight, ozone and oxidation. It has good resistance to heat and does not soften as natural rubber does under severe exposure. It has moderate oil resistance but is not suitable for use with petrol. It can be compounded to possess flame retardant properties.

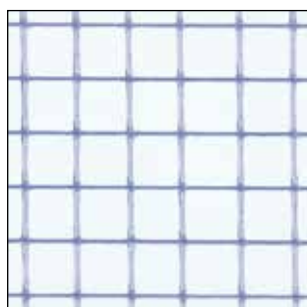
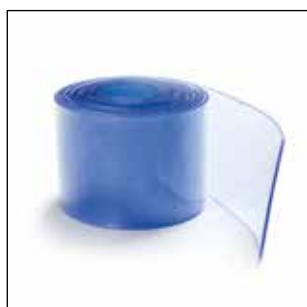
quality : CR  
 colour : black  
 execution : closed cellfoam  
 density : 150 kg/m<sup>3</sup> +/- 20  
 temperature range : -40°C / +120°C

article code	thickness (mm)	width (mm)	length (mm)	execution	price per m <sup>2</sup> (euro)
27800002	2	1000	20000		6,70
27800003	3	1000	20000		10,20
27800004	4	1000	20000		13,50
27800005	5	1000	20000		16,90
27800006	6	1000	20000		20,30
27800008	8	1000	20000		27,10
27800010	10	1000	20000		33,90
27800015	15	1000	10000		50,70
27800020	20	1000	10000		67,70
27800025	25	1000	2000		95,00
27800030	30	1000	2000		110,00
27800040	40	1000	2000		146,00
27800050	50	1000	2000		183,00
27800060	60	1000	2000	glued 2x30mm	220,00
27800080	80	1000	2000	glued 2x40mm	290,00
27800100	100	1000	2000	glued 2x50mm	370,00

article code	thickness (mm)	width (mm)	length (mm)	execution	price per m <sup>2</sup> (euro)
27810002	2	1000	20000	adhesive	14,30
27810003	3	1000	20000	adhesive	16,50
27810004	4	1000	20000	adhesive	19,80
27810005	5	1000	20000	adhesive	23,70
27810006	6	1000	20000	adhesive	26,50
27810008	8	1000	20000	adhesive	32,00
27810010	10	1000	20000	adhesive	39,00
27810015	15	1000	10000	adhesive	53,00
27810020	20	1000	10000	adhesive	68,00



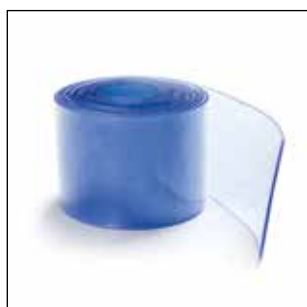
## Flexible PVC sheets



article code	thickness (mm)	width (mm)	length (mm)	execution	price p/meter (euro)
49620100	2	1000	20000	transparent	20,00
49620150	2	1500	20000	transparent	30,50
49630100	3	1000	20000	transparent	30,50
49630150	3	1500	20000	transparent	44,50
49640150	4	1500	20000	transparent	58,00
49650100	5	1000	20000	transparent	52,00
49650150	5	1500	20000	transparent	79,00
49750100	6,5	1000	20000	transparent with insertions	145,00
49750145	6,5	1450	20000	transparent with insertions	210,00
49750215	6,5	2150	20000	transparent with insertions	360,00
49783100	1	1000	20000	transparent super UV	17,00
49783150	1	1500	20000	transparent super UV	26,00

## flexible PVC

### Flexible PVC strips



article code	thickness (mm)	width (mm)	length (mm)	execution	price p/meter (euro)
49002002	2	200	50000	strip curtains transparent	4,90
49003003	3	300	50000	strip curtains transparent	7,90
49004004	4	400	50000	strip curtains transparent	13,20
49102002	2	200	50000	strip curtains transparent polar	5,80
49103003	3	300	50000	strip curtains transparent polar	8,40
49203003	3	300	50000	strip curtains red transparent	11,60
49303003	3	300	50000	strip curtains green transparent	11,60
49403003	3	300	50000	strip curtains brons transparent	11,60
49927202	2	200	50000	strip curtains yellow anti-insect	5,60
49927303	3	300	50000	strip curtains yellow anti-insect	9,10
49935302	2	200	50000	strip curtains blue	5,90
49935303	3	300	50000	strip curtains blue	9,30
49941202	2	200	50000	strip curtains red	6,50
49941303	3	300	50000	strip curtains red	10,30
49950202	2	200	50000	strip curtains grey	5,90
49950303	3	300	50000	strip curtains grey	9,30
49953202	2	200	50000	strip curtains black	5,90
49953303	3	300	50000	strip curtains black	9,30
49956202	2	200	50000	strip curtains white	5,90
49956303	3	300	50000	strip curtains white	9,30

article code	execution	price per piece (euro)
49801000	hook-on rail, 1000 mm rvs	15,00
49800200	clamps 200 mm	4,00
49800300	clamps 300 mm	6,00

**Silicone hoses**



## Straights



colour : blue  
 plies : 3 or 4 polyester insertions  
 burst pressure : 3:1  
 temperature range : -60°C / +180°C

**Application**

Cooling systems, charge air systems, induction systems and negative/positive pressure signal lines.

article code	bore size (mm)	length (mm)	price per piece (euro)
405100006	6	1000	13,00
405100010	10	1000	17,00
405100012	12	1000	20,00
405100013	13	1000	21,00
405100016	16	1000	24,00
405100018	18	1000	27,00
405100019	19	1000	28,00
405100022	22	1000	29,00
405100025	25	1000	31,00
405100028	28	1000	35,00
405100030	30	1000	37,00
405100032	32	1000	39,00
405100035	35	1000	42,00
405100038	38	1000	45,00
405100040	40	1000	48,00
405100042	42	1000	49,00
405100045	45	1000	52,00
405100048	48	1000	56,00
405100050	50	1000	58,00
405100055	55	1000	63,00
405100060	60	1000	69,00
405100065	65	1000	73,00
405100070	70	1000	79,00
405100076	76	1000	84,00
405100080	80	1000	87,00
405100085	85	1000	92,00
405100089	89	1000	98,00
405100100	100	1000	118,00
405100102	102	1000	121,00

## Straights oil resistant



colour : blue  
 inner coating : fluor / Viton  
 plies : 3 or 4 polyester insertions  
 burst pressure : 3:1  
 temperature range : -60°C / +150°C

**Application**

In systems with motor oil and other oils. Good resistance against antifreeze, ozone and high temperatures.

article code	bore size (mm)	length (mm)	price per piece (euro)
405100030/OB	30	1000	72,00
405100032/OB	32	1000	84,00
405100035/OB	35	1000	90,00
405100038/OB	38	1000	96,00
405100040/OB	40	1000	102,00
405100045/OB	45	1000	108,00
405100050/OB	50	1000	114,00
405100060/OB	60	1000	126,00
405100070/OB	70	1000	138,00

## Straights flexible



colour : blue  
 plies : 2 or 3 polyester insertions and integral  
 re-inforced with PVC wire  
 burst pressure : 3:1  
 temperature range : -60°C / +180°C

**Application**

Where flexibility is needed in cooling systems, charge air systems, induction systems and negative/positive pressure signal lines.

article code	bore size (mm)	length (mm)	price per piece (euro)
405110019	19	1000	39,00
405110022	22	1000	45,00
405110025	25	1000	49,00
405110028	28	1000	52,00
405110032	32	1000	59,00
405110035	35	1000	62,00
405110038	38	1000	65,00
405110040	40	1000	72,00
405110045	45	1000	78,00
405110051	51	1000	85,00
405110057	57	1000	98,00
405110060	60	1000	104,00
405110076	76	1000	124,00

## Elbow 90°



colour : blue  
 plies : 3 or 4 polyester insertions  
 burst pressure : 3:1  
 temperature range : -60°C / +180°C

**Application**

Cooling systems, charge air systems, induction systems and negative/positive pressure signal lines.

article code	bore size (mm)	length (mm)	price per piece (euro)
40650010	10	100	8,00
40650012	12	120	10,00
40650016	16	200	14,00
40650022	22	200	20,00
40650025	25	200	25,00
40650032	32	200	30,00
40650035	35	300	35,00
40650038	38	300	40,00
40650040	40	300	42,00
40650045	45	300	45,00
40650050	50	300	50,00
40650055	55	300	55,00
40650060	60	300	60,00
40650065	65	300	65,00
40650070	70	300	70,00
40650075	75	300	75,00
40650080	80	200	80,00
40650100	100	200	100,00



## Elbow 45°



colour : blue  
 plies : 3 or 4 polyester insertions  
 burst pressure : 3:1  
 temperature range : -60°C / +180°C

**Application**

Cooling systems, charge air systems, induction systems and negative/positive pressure signal lines.

article code	bore size (mm)	length (mm)	price per piece (euro)
40750010	10	100	9,00
40750012	12	120	11,00
40750016	16	200	16,00
40750022	22	200	22,00
40750025	25	200	28,00
40750032	32	200	33,00
40750035	35	300	39,00
40750038	38	300	44,00
40750040	40	300	47,00
40750045	45	300	50,00
40750050	50	300	55,00
40750055	55	300	60,00
40750060	60	300	65,00
40750065	65	300	70,00
40750070	70	300	78,00
40750075	75	300	83,00
40750080	80	200	90,00
40750100	100	200	110,00

## Reducers straights



colour : blue  
 plies : 3 or 4 polyester insertions  
 burst pressure : 3:1  
 temperature range : -60°C / +180°C

**Application**

Cooling systems, charge air systems, induction systems and negative/positive pressure signal lines.

article code	bore size (mm)	length (mm)	price per piece (euro)
60920207	34-45	102	14,00
60920211	38-45	150	16,00
60920206	38-51	140	17,00
60920212	40-50	150	18,00
60920204	45-51	150	19,00
60920205	50-60	140	20,00
60920208	60-70	102	22,00
60920209	63-76	150	28,00
60920210	90-70	127	33,00

**Bellows**

colour : blue  
 plies : 3 or 4 polyester insertions  
 burst pressure : 3:1  
 temperature range : -60°C / +180°C

**Application**

Cooling systems, charge air systems, induction systems and negative/positive pressure signal lines.

article code	bore size (mm)	length (mm)	price per piece (euro)
60510034	34	120	35,00
60510038	38	120	42,00
60510042	42	120	44,00
60510048	48	120	46,00
60510054	54	150	56,00
60510060	60	160	64,00
60510076	76	180	69,00
60510089	89	200	83,00
60510108	108	200	90,00
60510114	114	200	104,00
60510133	133	200	118,00
60510140	140	200	128,00

## Bellows oil resistant



colour : green  
 inner coating : fluor / Viton  
 plies : 3 or 4 polyester insertions  
 burst pressure : 3:1  
 temperature range : -50°C / +180°C

**Application**

Cooling systems, charge air systems, induction systems and negative/positive pressure signal lines.

article code	bore size (mm)	length (mm)	price per piece (euro)
60500034	34	120	42,00
60500038	38	120	51,00
60500042	42	120	53,00
60500048	48	120	56,00
60500054	54	150	68,00
60500060	60	160	77,00
60500076	76	180	83,00
60500089	89	200	100,00
60500108	108	200	108,00
60500114	114	200	124,00
60500133	133	200	140,00
60500140	140	200	154,00

## Hose clamps



type : type 1, 1 stainless steel  
 steel band : width 20 mm x thickness 1 mm  
 socket screw : M6 x 45 / 8.8 G

**Application**

A very strong and broad hose clamp which can be applied to flexible silicone hoses and bellows.

article code	nominal size (mm)	clamp reach (mm)	price per piece (euro)
1073035	35	31 - 35	4,00
1073040	40	35 - 40	4,00
1073045	45	40 - 45	4,00
1073050	50	44 - 50	4,00
1073055	55	49 - 55	4,00
1073060	60	54 - 60	4,00
1073065	65	59 - 65	4,00
1073070	70	64 - 70	4,00
1073075	75	69 - 75	4,00
1073080	80	74 - 80	4,00

## Hose clamps



type : type 2, 2 stainless steel  
 steel band : width 25 mm x thickness 1 mm  
 socket screw : M8 x 60 / 8.8 G

**Application**

A very strong and broad hose clamp which can be applied to flexible silicone hoses and bellows.

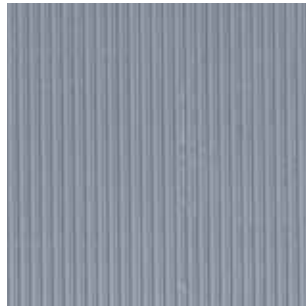
article code	nominal size (mm)	clamp reach (mm)	price per piece (euro)
10730095	95	85 - 95	9,00
10730100	100	90 - 100	9,00
10730105	105	95 - 105	9,00
10730110	110	100 - 110	9,00
10730115	115	105 - 115	10,00
10730120	120	110 - 120	10,00
10730125	125	115 - 125	10,00
10730130	130	120 - 130	10,00
10730135	135	125 - 135	11,00
10730140	140	130 - 140	11,00
10730145	145	135 - 145	11,00
10730150	150	140 - 150	11,00
10730155	155	145 - 155	11,00
10730160	160	150 - 165	12,00
10730165	165	155 - 170	12,00
10730170	170	160 - 175	12,00
10730175	175	165 - 180	14,00
10730180	180	170 - 185	14,00
10730190	190	180 - 195	14,00
10730200	200	190 - 205	14,00
10730210	210	200 - 215	15,00
10730220	220	210 - 225	16,00
10730230	230	220 - 235	17,00
10730240	240	230 - 245	18,00
10730250	250	240 - 255	18,00
10730260	260	250 - 265	19,00
10730270	270	260 - 275	19,00
10730280	280	270 - 285	20,00
10730290	290	280 - 295	20,00
10730300	300	290 - 305	21,00
10730310	310	300 - 315	22,00

## Flooring and matting





### Small ribbed



quality	: SBR/NR
execution	: upper side lengthwise fine ribbed, reverse with cloth impression
hardness	: 70° Shore A ± 5°
temperature range	: -10°C / +70°C

#### Application

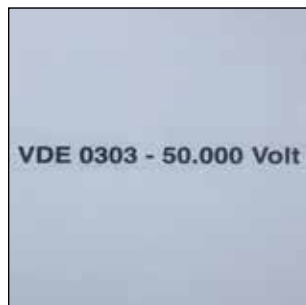
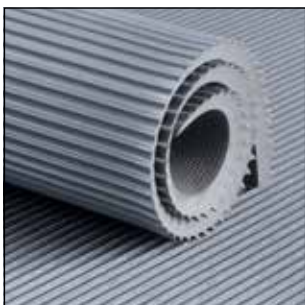
Anti-Slip protection, commercial vehicles, construction sites, entryways, indoor/outdoor aisle ways, industrial shelves, scraper mats, shelf liners, toolbox liners, van flooring.

article code	thickness (mm)	width (mm)	length (mm)	colour	execution	price m <sup>2</sup> (euro)
30100100	3	1000	10000	black	standard	10,00
30100120	3	1200	10000	black	standard	10,00
30100130	3	1200	20000	black	standard	10,00
30100140	3	1400	10000	black	standard	16,00
30100180	3	1800	10000	black	standard	16,00
30100200	3	2000	10000	black	standard	18,00
30102120	3	1200	10000	black	oil resistant*	19,00
30101224	3	1200	10000	black	with insertion	13,00
30101100	3	1000	10000	grey	standard	19,00
30101120	3	1200	10000	grey	standard	19,00
30101140	3	1400	10000	grey	standard	20,00
30101122	3	1200	10000	green	standard	21,00

\* does not resist aromatic oils and greases

### Switchboard flooring

According to VDE 0303 and EN 60243-1:1999



quality	: SBR/NR
execution	: upper side lengthwise fine ribbed, reverse with cloth impression
hardness	: 65° Shore A ± 5°
temperature range	: -20°C / +70°C

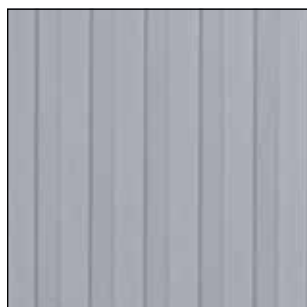
#### Application

Insulating mattings (dielectric carpets) are designed to protect people and parts of electrical equipment at switchboards, transformers and other high voltage workplaces.

article code	thickness (mm)	width (mm)	length (mm)	colour	reverse cloth impression	price m <sup>2</sup> (euro)
30104970	3	1000	10000	grey	30.000 Volt	34,50
30104980	3	1200	10000	grey	30.000 Volt	34,50
30104990	4,5	1000	10000	grey	50.000 Volt	52,00
30105000	4,5	1200	10000	grey	50.000 Volt	52,00

## ribbed flooring

### Medium ribbed



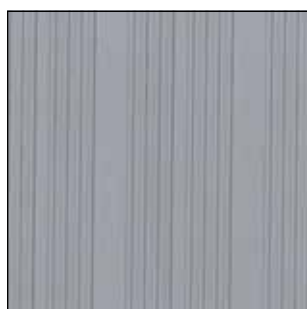
quality	: SBR/NR
execution	: upper side lengthwise broad ribbed, reverse with cloth impression.
hardness	: 65° Shore A ± 5°
temperature range	: -30°C / +60°C

#### Application

Anti-Slip protection, commercial vehicles, construction sites, entryways, indoor/outdoor aisle ways, industrial shelves, scraper mats, shelf liners, toolbox liners, van flooring.

article code	thickness (mm)	width (mm)	length (mm)	colour	price m <sup>2</sup> (euro)
30111001	3	1200	10000	black	12,00
30111002	3	1200	10000	grey	21,50

### Combi ribbed



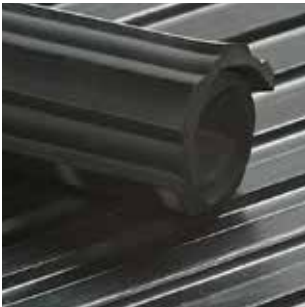
quality	: SBR/NR
execution	: upper side lengthwise fine and broad ribbed, reverse with cloth impression.
hardness	: 80° Shore A ± 5°
temperature range	: -30°C / +60°C

#### Application

Anti-Slip protection, commercial vehicles, construction sites, entryways, indoor/outdoor aisle ways, industrial shelves, scraper mats, shelf liners, toolbox liners, van flooring.

article code	thickness (mm)	width (mm)	length (mm)	colour	price m <sup>2</sup> (euro)
30110089	3	1000	10000	black	12,50
30110090	3	1200	10000	black	12,50
30110091	3	1200	10000	grey	23,00
30115001	3	1500	10000	black	17,50

**Broadribbed Typ 0613**



quality : SBR/NR  
 execution : upper side lengthwise broad ribbed,  
 reverse with cloth impression.  
 hardness : 65° Shore A ± 5°  
 temperature range : -30°C / +60°C

**Application**

Anti-Slip protection, commercial vehicles, construction sites, entryways, indoor/outdoor aisle ways, industrial shelves, scraper mats, shelf liners, toolbox liners, van flooring.

article code	thickness (mm)	width (mm)	length (mm)	colour	price m <sup>2</sup> (euro)
30120100	5	1000	10000	black	20,00
30120120	5	1200	10000	black	20,00
30120101	6	1000	10000	black	23,00
30120121	6	1200	10000	black	23,00
30120122	8	1200	10000	black	32,00

**Industrial tears**



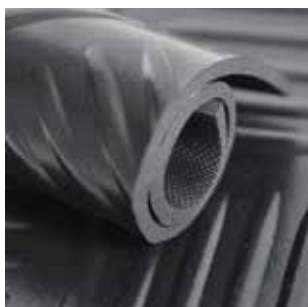
quality : SBR/NR  
 execution : upper side industrial tears profile,  
 reverse with cloth impression.  
 hardness : 70° Shore A ± 5°  
 temperature range : -10°C / +70°C

**Application**

Anti-Slip protection, commercial vehicles, construction sites, entryways, indoor/outdoor aisle ways, industrial shelves, scraper mats, shelf liners, toolbox liners, van flooring.

article code	thickness (mm)	width (mm)	length (mm)	colour	price m <sup>2</sup> (euro)
30140150	3	1500	10000	black	16,50
30140151	5	1200	10000	black	26,50
30140152	3	1500	10000	grey	26,50

## Checker



quality : SBR/NR  
 execution : upper side checker profile,  
 reverse with cloth impression  
 hardness : 70° Shore A ± 5°  
 temperature range : -15°C / +70°C

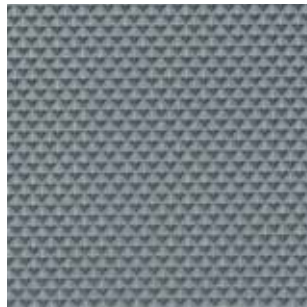
### Application

Anti-Slip protection, commercial vehicles, construction sites, entryways, indoor/outdoor aisle ways, industrial shelves, scraper mats, shelf liners, toolbox liners, van flooring.

article code	thickness (mm)	width (mm)	length (mm)	colour	execution	price m <sup>2</sup> (euro)
30150142	3	1400	10000	black	standard	16,00
30150148	3	1600	10000	black	standard	19,50
30150144	5	1400	10000	black	standard	25,00
30156160	3	1400	10000	black	anti static/oil resistant*	52,00
30156180	3	1400	10000	grey	3 mm isolating 25kV	56,00
30156201	3	1400	10000	black	outdoor	83,00

\* does not resist aromatic oils and greases

## Diamond



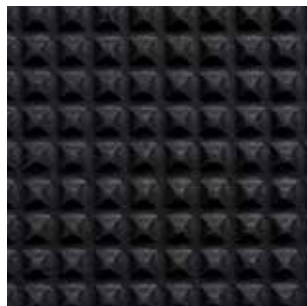
quality : SBR/NR  
 execution : upper side diamond profile,  
 reverse with cloth impression  
 hardness : 70° Shore A ± 5°  
 temperature range : -10°C / +70°C

**Application**

Anti-Slip protection, commercial vehicles, construction sites, entryways, indoor/outdoor aisle ways, industrial shelves, scraper mats, shelf liners, toolbox liners, van flooring.

article code	thickness (mm)	width (mm)	length (mm)	colour	price m <sup>2</sup> (euro)
30190201	2,6	1500	10000	black	32,00
30190206	2,6	1500	10000	grey	38,00

## Pyramid



quality : SBR/NR  
 execution : upper side pyramid profile,  
 reverse with cloth impression  
 hardness : 70° Shore A ± 5°  
 temperature range : -10°C / +70°C

**Application**

Anti-Slip protection, commercial vehicles, construction sites, entryways, indoor/outdoor aisle ways, industrial shelves, scraper mats, shelf liners, toolbox liners, van flooring.

article code	thickness (mm)	width (mm)	length (mm)	colour	price m <sup>2</sup> (euro)
30190100	4	1000	10000	black	27,00
30190101	4	1200	10000	black	27,00

## stud flooring

### Decktop non-skid



quality : SBR/NR  
 execution : upper side rhombic profile,  
 reverse with cloth impression.  
 hardness : 70° Shore A ± 5°  
 temperature range : -10°C / +70°C

#### Application

Superb slip resistance when wet, making it ideal for use at boats, harbours and in shower and swimming pool surrounds as well as other wet areas requiring non-skid resistance.

article code	thickness (mm)	width (mm)	length (mm)	colour	price m <sup>2</sup> (euro)
30241040	3,2	1000	10000	black	32,00
30241055	3,2	1000	10000	grey	38,00
30241065	3,2	1000	10000	blue	38,00

### IN 32 and IN 42



quality : SBR/NR  
 execution : upper side studded profile,  
 reverse with cloth impression.  
 hardness : 70° Shore A ± 5°  
 temperature range : -20°C / +70°C

#### Application

Anti-Slip protection, commercial vehicles, construction sites, entryways, indoor/outdoor aisle ways, industrial shelves, scraper mats, shelf liners, toolbox liners, van flooring.

article code	thickness (mm)	width (mm)	length (mm)	colour	stud (ø mm)	stud height (mm)	price m <sup>2</sup> (euro)
30160100	3	1000	10000	black	22	1	18,50
30160101	3	1200	10000	black	22	1	18,50
30160102	3	1500	10000	black	22	1	26,00
30160103	3	1000	10000	grey	22	1	26,00
30160104	3	1200	10000	grey	22	1	26,00
30160120	4	1000	10000	black	22	1	23,00
30160121	4	1200	10000	black	22	1	23,00
30160130	4	1000	10000	grey	22	1	31,00
30160131	4	1200	10000	grey	22	1	31,00

## IN 4028



quality : SBR/NR  
 execution : upper side studded profile,  
 reverse with cloth impression.  
 hardness : 70° Shore A ± 5°  
 temperature range : -10°C / +70°C

**Application**

Non-skid protection, commercial vehicles, construction sites, entryways, indoor/outdoor aisle ways, industrial shelves, scraper mats, shelf liners, toolbox liners, van flooring.

article code	thickness (mm)	width (mm)	length (mm)	colour	stud (ø mm)	stud height (mm)	price m <sup>2</sup> (euro)
30161144	4	1450	10000	black	28	0,5	36,00
30161145	4	1450	10000	grey	28	0,5	40,00
30161146	4	1450	10000	blue	28	0,5	42,00
30161147	4	1450	10000	brown	28	0,5	42,00
30161148	4	1450	10000	terracotta	28	0,5	43,00

## IN 4012



quality : SBR/NR  
 execution : upper side studded profile,  
 reverse with cloth impression.  
 hardness : 70° Shore A ± 5°  
 temperature range : -10°C / +70°C

**Application**

Non-skid protection, commercial vehicles, construction sites, entryways, indoor/outdoor aisle ways, industrial shelves, scraper mats, shelf liners, toolbox liners, van flooring.

article code	thickness (mm)	width (mm)	length (mm)	colour	stud (ø mm)	stud height (mm)	price m <sup>2</sup> (euro)
30165010	4	1500	10000	black	12	1	19,00
30165012	4	1500	10000	grey	12	1	38,00

## stud flooring

### IN 4520



quality : SBR/NR  
 execution : upper side studded profile,  
 reverse grinded.  
 hardness : 70° Shore A ± 5°  
 temperature range : -20°C / +90°C

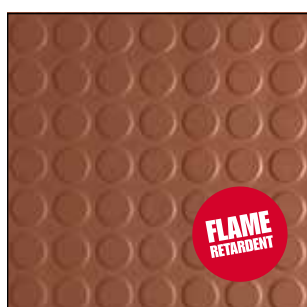
#### Application

Design rubber flooring for use at kitchens, living rooms, showrooms, boutiques, offices, entrance halls.

article code	thickness (mm)	width (mm)	length (mm)	colour	stud (ø mm)	stud height (mm)	EURO/m <sup>2</sup>
30175001	4,5	1000	10000	black	22	2	68,00
30175002	4,5	1000	10000	blue	22	2	78,00
30175003	4,5	1000	10000	green	22	2	78,00
30175010	4,5	1000	10000	grey	22	2	78,00
30175011	4,5	1000	10000	black (oil resistant)*	22	2	84,00
30175020	4,5	1000	10000	black (outdoor)	22	2	76,00

\* does not resist aromatic oils and greases

### IN 3023



quality : SBR/NR  
 execution : upper side studded profile,  
 reverse with cloth impression  
 hardness : 70° Shore A ± 5°  
 temperature range : -20°C / +90°C

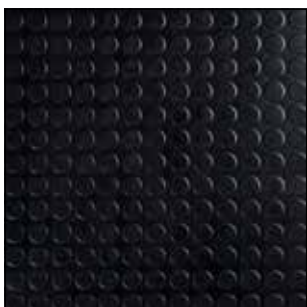
#### Application

Design rubber flooring for use at kitchens, living rooms, showrooms, boutiques, offices, entrance halls.

article code	thickness (mm)	width (mm)	length (mm)	colour	stud (ø mm)	stud height (mm)	EURO/m <sup>2</sup>
30160094	3	1000	10000	black	23	0,8	53,00
30160095	3	1000	10000	grey	23	0,8	59,00
30160098	3	1000	10000	brown	23	0,8	59,00



## Stud T26 tile



quality	: SBR/NR
execution	: upper side studded profile, reverse with cloth impression.
hardness	: 75° Shore A ± 5°
temperature range	: -10°C / +70°C

**Application**

Design rubber tiles for use at kitchens, living rooms, showrooms, boutiques, offices, entrance halls.

article code	thickness (mm)	dimensions (mm)	colour	stud (ø mm)	stud height (mm)	price m <sup>2</sup> (euro)
64001101	2,6	500 x 500	black	26	0,6	39,00

## Ardesia tile



quality	: SBR/NR
execution	: upper side slade execution, reverse grinded
hardness	: 75° Shore A ± 5°
temperature range	: -10°C / +70°C

**Application**

Design rubber tiles for use at kitchens, living rooms, showrooms, boutiques, offices, entrance halls.

article code	thickness (mm)	dimensions (mm)	colour	price m <sup>2</sup> (euro)
64012101	3,5	1000 x 1000	black	53,00
64012201	3,5	1000 x 1000	dark grey	57,00

## Recyfloor R12



quality : recycled rubber with PU bonding agent  
 execution : black granules with coloured speckles  
 hardness : 35° Shore A ± 5°  
 temperature range : -30°C / +80°C

### Application

Made from recycled rubber. Universal product for sound insulation and vibration absorption. Can be used as underlay under parquet, laminate, carpeting and ceramic tiles as well as under linoleum and PVC flooring and reduces unwanted noise and vibration. It can also be used for vibration absorption of machines, elevator motors, pumps, ventilation systems.

article code	thickness (mm)	width (mm)	length (mm)	weight (kilo/m <sup>2</sup> )	EURO/m <sup>2</sup>
33031500	2	1500	20000	4	7,00
33041500	4	1500	20000	5	8,00
33051500	5	1500	20000	6	11,00
33061500	6	1500	20000	5,4	12,00
33081500	8	1500	10000	7,3	15,00
33101500	10	1500	10000	7	17,00
33151500	15	1500	10000	7	27,00
33201500	20	1500	5000	10,5	35,00

## Tile carrier



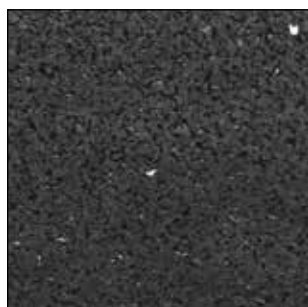
quality : recycled rubber with PU bonding agent  
 execution : black granules with coloured speckles  
 hardness : 35° Shore A ± 5°  
 temperature range : -30°C / +80°C

### Application

Made from recycled rubber. For vibration absorption of machines, elevator motors, pumps, ventilation systems.

article code	thickness (mm)	dimensions (mm)	packing	price per piece (euro)
33000010	10	100 x 100	135	0,40
33000012	10	150 x 150	120	0,90
33000014	10	200 x 200	80	1,60
33000020	15	100 x 100	100	0,60
33000022	15	150 x 150	70	1,20
33000024	15	200 x 200	50	2,40
33000030	20	100 x 100	80	0,80
33000032	20	150 x 150	60	1,80
33000034	20	200 x 200	40	3,00

### Recyfloor R12 black



quality : recycled rubber with PU bonding agent  
 execution : black granules  
 hardness : 35° Shore A ± 5°  
 temperature range : -30°C / +80°C

#### Application

Made from recycled rubber. Universal product for sound insulation and vibration absorption. Can be used as underlay under parquet, laminate, carpeting and ceramic tiles as well as under linoleum and PVC flooring and reduces unwanted noise and vibration. It can also be used for vibration absorption of machines, elevator motors, pumps, ventilation systems.

article code	thickness (mm)	width (mm)	length (mm)	weight (kilo/m <sup>2</sup> )	EURO/m <sup>2</sup>
34021500	2	1500	11000	2	8,00
34041500	4	1500	20000	4	10,00
34061500	6	1500	20000	6	15,00
34081500	8	1500	10000	8	19,00
34101500	10	1500	10000	10	21,00

### Recyfloor protect



quality : recycled rubber with PU bonding agent  
 execution : grey/red granules with coloured speckles  
 hardness : 40° Shore A ± 5°  
 temperature range : -30°C / +100°C

#### Application

Heavy-duty structural protection mat used as a cushioning and shielding layer in demanding applications. It provides outstanding physical protection in compliance with DIN 18195 Part 10 / VDI 2700 Part 15 in a variety of structures including tunnels, parking garage decks, flat roofs and green roofs. Also perfect for securing loads in trucks, rail wagons, ships and planes.

article code	thickness (mm)	width (mm)	length (mm)	colour	weight (kilo/m <sup>2</sup> )	EURO/m <sup>2</sup>
33051510	5	1250	12000	grey/red	5	36,00

Ultrafloor



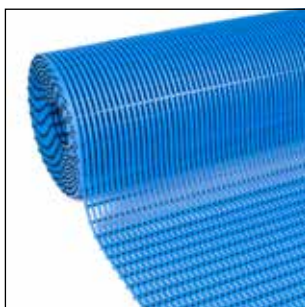
quality : recycled rubber with PU bonding agent  
 execution : black granules with coloured EPDM speckles  
 hardness : 60° Shore A ± 5°  
 temperature range : -30°C / +80°C

**Application**

The flooring is extremely rugged, easy to clean and water-repellent. It deadens footfall noise and floor-to-ceiling noise. It is an ideal flooring material for use in fitness centre, shops, busses, airports, nurseries, schools.

article code	thickness (mm)	width (mm)	length (mm)	colour	weight (kilo/m <sup>2</sup> )	EURO/m <sup>2</sup>
33801016	6	1220	10000	black/grey	6	44,00
33801026	6	1220	10000	black/blue	6	44,00
33801226	6	1500	10000	black/blue	6	44,00
33801036	6	1220	10000	black/red	6	44,00
33801034	6	1220	10000	black/green	6	44,00
33801038	6	1220	10000	black/yellow	6	46,00
33801126	6	1220	10000	black/blue/white	6	46,00
33801018	8	1220	10000	black/grey	8	50,00
33801028	8	1220	10000	black/blue	8	50,00

PVC-Non-skid-mat



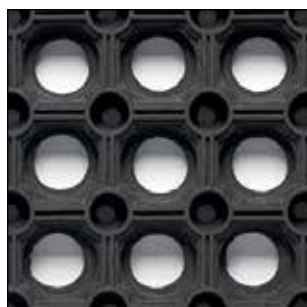
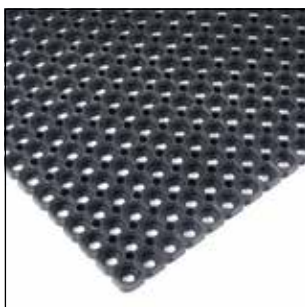
quality : PVC  
 execution : soft PVC with ribbed profile  
 hardness : 80° Shore A ± 5°  
 temperature range : -5°C / +60°C

**Application**

Suitable for all areas where considerable amounts of moisture need to drain off quickly such as in changing rooms, spas, massage parlours, hospitals, swimming pools and saunas. Due to the use of soft plastic profiles, the mat provides great ergonomic comfort.

article code	thickness (mm)	width (mm)	length (mm)	colour	weight per rol (kilo)	EURO/m <sup>2</sup>
65001030	10	1000	10000	blue	60	120,00
65001034	10	1000	10000	red	60	120,00
65001036	10	1000	10000	grey	60	120,00

## Vera light execution



quality : SBR/NR  
 hardness : 60° Shore A ± 5°  
 temperature range : -30°C / +70°C

### Application

Entrance mat for in- and outdoor use. Also applicable at playgrounds, ski and skating centers and swimming pools.

article code	thickness (mm)	dimensions (mm)	colour	execution	weight (kilo)	price per piece (euro)
31010156	22	600 x 400	black	open	2	7,00
31010155	22	1000 x 500	black	open	5	16,50
31010154	18	1200 x 800	black	open	9	27,00
31010157	22	1200 x 800	black	open	9	32,00
31010158	22	1200 x 800	black	closed	9	32,00
31010160 *	22	1200 x 800	red	open	9	48,00
31010153	18	1500 x 1000	black	open	15	37,00
31010150	22	1500 x 1000	black	open	15	42,00
31010149	22	1500 x 1000	black	closed	15	42,00

\* does not resist aromatic oils and greases

## Vera heavy execution



quality : SBR/NR  
 hardness : 55° Shore A ± 5°  
 temperature range : -30°C / +70°C

### Application

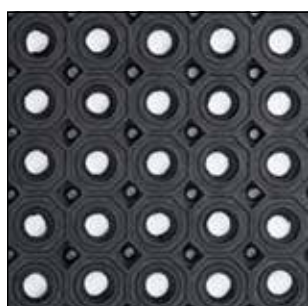
Entrance mat for in- and outdoor use. Also applicable at playgrounds, ski and skating centers and swimming pools.

article code	thickness (mm)	dimensions (mm)	colour	execution	weight (kilo)	price per piece (euro)
31010151	23	1500 x 1000	black	open	19	48,00
31010149	23	1500 x 1000	black	closed	19	48,00



article code		price per piece (euro)
31000000	connector	1,20
31000010	brushes red - blue - yellow - green - grey - black	0,60

### Vera small honeycomb execution



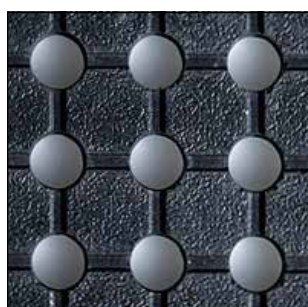
quality : SBR/NR  
 hardness : 55° Shore A ± 5°  
 temperature range : -30°C / +70°C

#### Application

Entrance mat for in- and outdoor use. Also applicable at playgrounds, ski and skating centers and swimming pools. Better suited for wheelchairs.

article code	thickness (mm)	dimensions (mm)	colour	execution	weight (kilo)	price per piece (euro)
31010148	13	1500 x 1000	black	open	12	58,00
31000001	connector					1,60

### Ringmat on roll



quality : SBR/NR  
 hardness : 60° Shore A ± 5°  
 temperature range : -10°C / +70°C

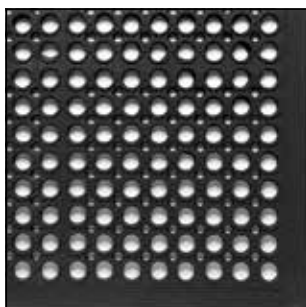
#### Application

Entrance mat for in- and outdoor use. Also applicable at playgrounds, ski and skating centers and swimming pools.

article code	thickness (mm)	width (mm)	length (mm)	colour	EURO/m <sup>2</sup>
30290180	10	915	10000	black	39,00
30290160	10	1830	10000	black	39,00

## anti-fatigue mats

### Ringmat M14



quality	: NBR/SBR
execution	: ringmat with all around sloping edges
hardness	: 70° Shore A ± 5°
temperature range	: -30°C / +70°C

#### Application

Oily, greasy industrial workstation or work cells. Bar and kitchen wet areas.

article code	thickness (mm)	dimensions (mm)	colour	execution	weight (kilo)	price per piece (euro)
31011159	13	1520 x 910	black	with sloping edges*	15	36,00

\* does not resist aromatic oils and greases

### Soft diamond



quality	: SBR/NR + EVA
execution	: upper side diamond profile, reverse EVA
hardness	: 65° Shore A ± 5° / 30° Shore A ± 5°

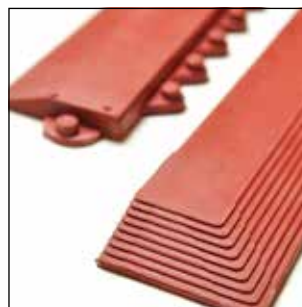
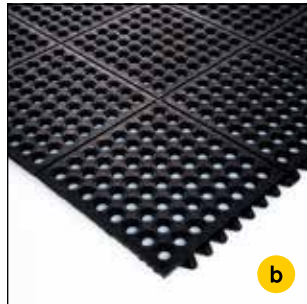
#### Application

Anti-fatigue matting for work places where the work is conducted standing up. The mat will make the day more comfortable.

article code	thickness (mm)	dimensions (mm)	colour	weight (kilo)	price per piece (euro)
31081520	12	900 x 600	black	9	32,00
31081510	12	1525 x 915	black	23	58,00



Modular mat



quality : a, b and d - SBR/NR  
 quality : c - NBR/NR  
 execution : anti-fatigue matting  
 hardness : 55° Shore A ± 5°  
 temperature range : -30°C / +70°C

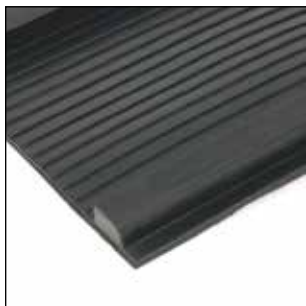
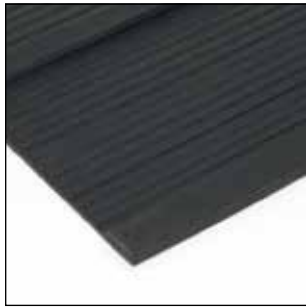
**Application**

Anti-fatigue matting for work places where the work is conducted standing up. The mat will make the day more comfortable.

article code	thickness (mm)	dimensions (mm)	colour	execution	price per piece (euro)
31081167	14	900 x 900	black	closed execution (a)	27,00
31081168	14	900 x 900	black	open execution (b)	19,00
31081169	14	900 x 900	red (oil resistant)*	open execution (c)	32,00
31081170	13	900 x 900	black	closed execution diamond top (d)	23,00
31081175	14	75 x 990	black	beveled strips for type a + b	5,50
31081176	14	75 x 990	red (oil resistant)*	beveled strips for type c	8,00

\* does not resist aromatic oils and greases

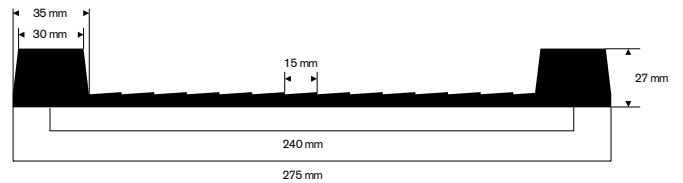
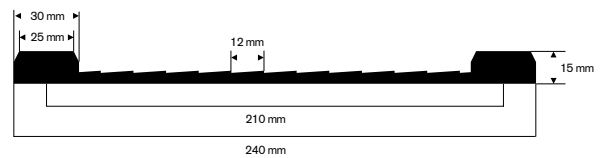
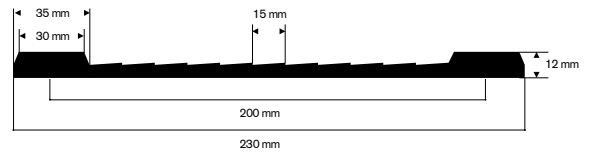
Rearboard mat



quality : SBR/NR  
 execution : upper side profiles, reverse  
 with cloth impression  
 hardness : 65° Shore A ± 5°  
 temperature range : -30°C / +70°C

**Application**

Horse and livestock trailer flooring.



article code	thickness (mm)	width x length (mm)	colour	weight (kilo)	price per piece (euro)
31081182	15	1750 x 1550	black	34	150,00
31081190	12	1220 x 2140	black	30	110,00
31081181	27	2400 x 1200	black	42	190,00

**Turtle mat**



quality : SBR/NR  
 execution : upper side turtle mat profile,  
 reverse with cloth impression  
 hardness : 60° Shore A ± 5°  
 temperature range : -30°C / +70°C

**Application**

Horse, livestock trailer and stable flooring.

article code	thickness (mm)	width (mm)	length (mm)	colour	EURO/m <sup>2</sup>
30263165	6	1650	10000	black	32,00
30264180	8	1800	10000	black	42,00
30264200	8	2000	10000	black	42,00
30275180	10	1800	10000	black	53,00
30275200	10	2000	10000	black	53,00

**Trailer mat**



quality : SBR/NR  
 execution : both sides with cloth impression  
 hardness : 70° Shore A ± 5°  
 temperature range : -10°C / +70°C

**Application**

Horse and livestock trailer flooring.

article code	thickness (mm)	width (mm)	length (mm)	colour	execution	EURO/m <sup>2</sup>
30280180	8	1800	10000	black	both sides cloth impression	62,00
30280200	8	2000	10000	black	both sides cloth impression	62,00

**Block mat**



quality : SBR/NR  
 execution : upper side block profile,  
 reverse with cloth impression  
 hardness : 60° Shore A ± 5°  
 temperature range : -20°C / +70°C

**Application**

Horse and livestock trailer flooring.

article code	thickness (mm)	width (mm)	length (mm)	insertions	colour	EURO/m <sup>2</sup>
30260001	8	1500	10000	1	black	58,00

**Puzzle mat P25**



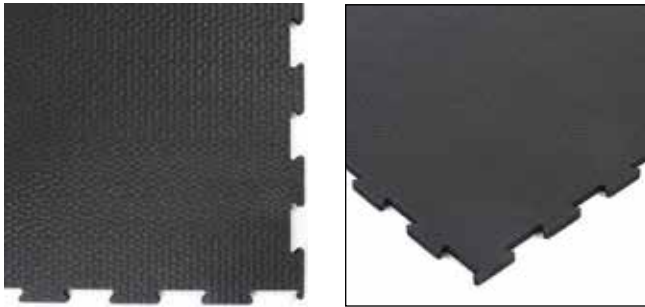
quality : SBR/NR  
 execution : interlocking mat with puzzle parts all  
 around  
 hardness : 65° Shore A ± 5°  
 temperature range : -30°C / +70°C

**Application**

Horse, livestock trailer and stable flooring.

article code	thickness (mm)	dimensions (mm)	colour	weight (kilo)	price per piece (euro)
31081245	17	1830 x 1220	black	50	112,00

**Puzzle mat P30**



quality : SBR/NR  
 execution : upper side turtle mat profile, reverse side with cloth impression  
 hardness : 65° Shore A ± 5°  
 temperature range : -30°C / +70°C

**Application**

Horse, livestock trailer and stable flooring.

article code	thickness (mm)	dimensions (mm)	colour	weight (kilo)	price per piece (euro)
31081196	18	1000 x 1000	black	24	75,00

**Stable mat M40**



quality : SBR/NR  
 execution : upper side broad ribbed, reverse with bubbles  
 hardness : 55° Shore A ± 5°  
 temperature range : -30°C / +70°C

**Application**

Horse, livestock trailer and stable flooring.

article code	thickness (mm)	dimensions (mm)	colour	weight (kilo)	price per piece (euro)
31081192	10	2000 x 1000	black	26	72,00
31081194	17	2000 x 1000	black	40	86,00

**Stable mat M42**



quality : SBR/NR  
 execution : upper side broad ribbed,  
 reverse with bubbles  
 hardness : 55° Shore A ± 5°  
 temperature range : -30°C / +70°C

**Application**

Horse, livestock trailer and stable flooring.

article code	thickness (mm)	dimensions (mm)	colour	weight (kilo)	price per piece (euro)
31081188	10	1500 x 1200	black	30	68,00
31081189	10	2000 x 1200	black	40	72,00

**Stable mat M45**



quality : SBR/NR  
 execution : upper side non skid profile,  
 reverse broad ribbed  
 hardness : 70° Shore A ± 5°  
 temperature range : -30°C / +70°C

**Application**

Horse, livestock trailer and stable flooring.

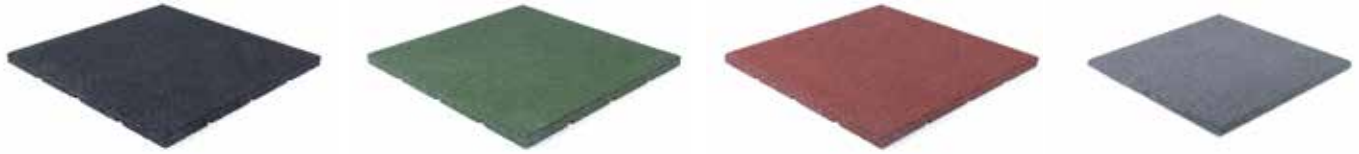
article code	thickness (mm)	dimensions (mm)	colour	weight (kilo)	price per piece (euro)
31081280	17	1830 x 1220	black	46	102,00

## Playground and patio tiles





### Patio and terrace tiles



article code	thickness (mm)	dimensions (mm)	colour	weight (kilo)	price per piece (euro)
31420104	25	400 x 400	grey	3,5	12,00
31420200	25	500 x 500	black	4	10,00
31420201	25	500 x 500	red	4	11,00
31420202	25	500 x 500	green	4	12,00
31430200	25	1000 x 1000	black	16	40,00
31430201	25	1000 x 1000	red	16	44,00
31430202	25	1000 x 1000	green	16	48,00

### Playground tiles

with connecting pins



article code	thickness (mm)	dimensions (mm)	colour	weight (kilo)	drop height nen 1177 (m)	price per piece (euro)
31400160	45	500 x 500	black	5	1,5	15,00
31400161	45	500 x 500	red	5	1,5	16,00
31400162	45	500 x 500	green	5	1,5	17,00
31400163	45	500 x 500	grey	5	1,5	20,00
31400160H	45	250 x 500	black	2,5	1,5	8,25
31400161H	45	250 x 500	red	2,5	1,5	8,80
31400162H	45	250 x 500	green	2,5	1,5	9,50
31400170	75	500 x 500	black	8	2,1	27,50
31400171	75	500 x 500	red	8	2,1	29,00

Keystone paver



article code	thickness (mm)	dimensions (mm)	colour	weight (kilo)	drop height nen 1177 (m)	price per piece (euro)
31400550	45	165 x 200	black	1	1,5	2,00
31400550	45	165 x 200	red	1	1,5	1,90

Puzzle tile



article code	thickness (mm)	dimensions (mm)	colour	weight (kilo)	price per piece (euro)
31500200	15	1000 x 1125	black	15	64,00
31500201	15	1000 x 1125	red	15	72,00
31500202	15	1000 x 1125	green	15	80,00

**PVC interlocking tiles**



Industrial tears



quality : PVC  
 hardness : 92° Shore A ± 5°  
 fire class : BFL S1  
 anti slip : DS R 10

**Application**

Office, showroom, workplace, exhibition floor, or as temporary flooring.



article code	thickness (mm)	dimensions (mm)	colour	price per piece (euro)
30180510	4	505 x 505	black	12,00
30180512	4	505 x 505	light grey	13,00
30180514	4	505 x 505	dark grey	13,00
30180456	4	505 x 505	blue	16,00
30180468	4	505 x 505	dark blue	16,00
30180458	4	505 x 505	red	16,00
30180466	4	505 x 505	creme	16,00
30180462	4	505 x 505	green	16,00
30180460	4	505 x 505	yellow	16,00
30180464	4	505 x 505	terra cotta	16,00

## PVC interlocking tiles

### Leather look

hidden connectors



quality : PVC  
 hardness : 92° Shore A ± 5°  
 fire class : BFL S1  
 anti slip : DS R 10

#### Application

Office, showroom, workplace, exhibition floor, or as temporary flooring.



article code	thickness (mm)	dimensions (mm)	colour	price per piece (euro)
30180600	5,5	500 x 500	black	14,00
30180602	5,5	500 x 500	dark grey	16,00
30180601	5,5	500 x 500	light grey	16,00
30180603	5,5	500 x 500	yellow	22,00
30180604	5,5	500 x 500	terra cotta	22,00
30180605	5,5	500 x 500	blue	22,00
30180609	5,5	500 x 500	dark blue	22,00
30180607	5,5	500 x 500	white	22,00

## Turtle surface



quality : PVC  
 hardness : 92° Shore A ± 5°  
 fire class : BFL S1  
 anti slip : DS R 10

**Application**

Office, showroom, workplace, exhibition floor, or as temporary flooring. The 7mm thickness is suitable for heavy use in for instance warehouses.



article code	thickness (mm)	dimensions (mm)	colour	price per piece (euro)
30180712	4,5	505 x 505	light grey	14,00
30180714	4,5	505 x 505	dark grey	14,00
30180728	7	505 x 505	dark grey	21,00

**TRIGOSA**

**+34 692 91 43 89 Barcelona (España)**

INDUSTRIAL RUBBER PRODUCTS